

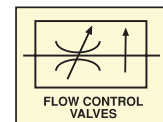
PRESSURE COMPENSATED NEEDLE VALVES SERIES FT270

210 BAR Rated*

250 BAR Rated valve - Pressure compensation stable up to 210 BAR

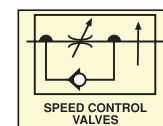
DOUBLE ACTING flow control in both directions
(pressure compensated in one direction only)

Article no.	Size BSP	Max Pressure BAR	Max Flow LPM	Price £	Price €
205100	1/4"	210	12	£215.20	€222.10
205101	3/8"	210	25	£229.80	€237.00
205102	1/2"	210	50	£302.70	€312.20
205103	3/4"	210	80	£400.30	€412.80
205104	1"	210	135	£1,245.70	€1,284.60



SINGLE ACTING with free reverse flow

Article no.	Size BSP	Max Pressure BAR	Max Flow LPM	Price £	Price €
205110	1/4"	210	12	£215.40	€222.10
205111	3/8"	210	25	£229.80	€237.00
205112	1/2"	210	50	£302.70	€312.20
205113	3/4"	210	80	£400.30	€412.80
205114	1"	210	135	£1,245.70	€1,284.60



Panel mounting nuts – STEEL

Article no.	Size	Price £	Price €
207003	1/8"	£3.20	€3.30
207004	1/4"	£3.90	€4.00
207005	3/8"	£4.20	€4.40
207006	1/2"	£7.00	€7.20
207008	3/4"	£9.00	€9.30
207009	1"	£10.50	€10.80



Materials

Body	Steel 9SMn28K
Stem	Steel
Stem seal	NITRIL (Others on request)
Temp. range	-20 to +100°C
Control knob	Aluminium
Thread	BSPP Female

Dimensions (mm)

Size	B	C	D	E	F	G	H	CH	WEIGHT kg
1/4"G	12.5	94	81.5	88.5	27	15	M20x1	30	0.58
3/8"G	13	110.5	94.5	103	33	17	M25x1	35	0.94
1/2"G	15.5	137	112	122	37	18	M30x1.5	45	1.83
3/4"G	17	163	138	150	47	24	M40x1.5	55	3.35
1"G	21	214	175	192	58	32	M50x1.5	70	7.00

