

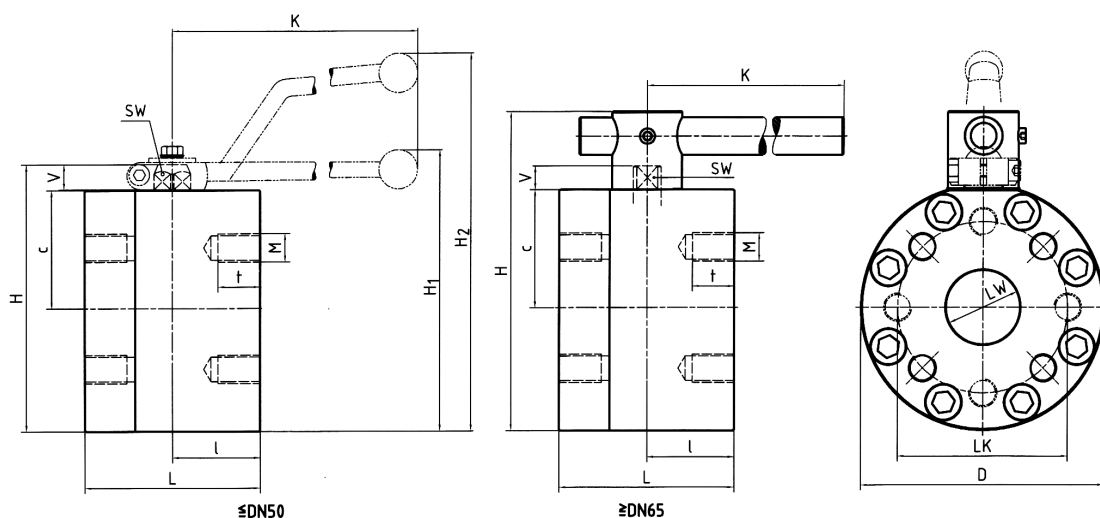
HIGH PRESSURE FLANGED BALL VALVE WITH ISO-CONNECTION, KH-ISO 6164

Steel / Stainless Steel
For Pressure up to 400 BAR



Article no.	Price £	Price €
PRICES AVAILABLE ON REQUEST		

Dimensions



ISO 6164 25 MPa (250 BAR)

Type	DN	LW	L	I	D	H	c	V	K	SW	LK	M	t	H ₁	H ₂
KH-ISO250	13	15	85	45	78	83	31	13	160	12	42(1)	4 x M8	16	-	127
KH-ISO250	19	20	88	38	119	110	36.5	14	200	14	50	4 x M8	15	114	-
KH-ISO250	25	25	88	38	126	117	39.5	14	200	14	62	4 x M10	20	120	-
KH-ISO250	32	32	105	50	145	158	68	17	320	17	73	4 x M12	21	167	-
KH-ISO250	38	38	110	55	165	178	78	17	320	17	85	4 x M16	24.5	187	-
KH-ISO250	51	47	116	58	198	210	94	17	320	17	98	4 x M16	25.5	219	-
KH-ISO250	56	58	123	58	198	210	94	17	320	17	118	4 x M20	33	219	-
KH-ISO250	63	70	150	75	208	270	100	20	600	16	145	4 x M20	33	-	-

ISO 6164 40 MPa (400 BAR)

Type	DN	LW	L	I	D	H	c	V	K	SW	LK	M	t	H ₁	H ₂
KH-ISO400	13	14	85	45	78	83	31	13	160	12	42(1)	4 x M8	16	-	127
KH-ISO400	19	18	88	38	119	110	36.5	14	200	14	50	4 x M8	15	114	-
KH-ISO400	25	22	88	38	126	117	39.5	14	200	14	62	4 x M10	20	120	-
KH-ISO400	32	29	105	50	145	158	68	17	320	17	73	4 x M12	21	167	-
KH-ISO400	38	35	110	55	165	178	78	17	320	17	85	4 x M16	24.5	187	-
KH-ISO400	51	43	116	58	198	210	94	17	320	17	98	4 x M16	25.5	219	-
KH-ISO400	56	53	123	58	198	210	94	17	320	17	118	4 x M20	31	219	-
KH-ISO400	63	58	150	75	224	286	108	20	600	16	145	4 x M24	37.5	-	-
KH-ISO400	70	63				OR					160	4 x M24			
KH-ISO400	80	76	180	80	259	315	114.5	26	600	19	175	4 x M30	35	-	-

These products are not 'PED Compliant' for use with GAS

Should you have a GAS application please contact our sales office in order that they can check the PED requirements and offer a CE marked suitable product.