

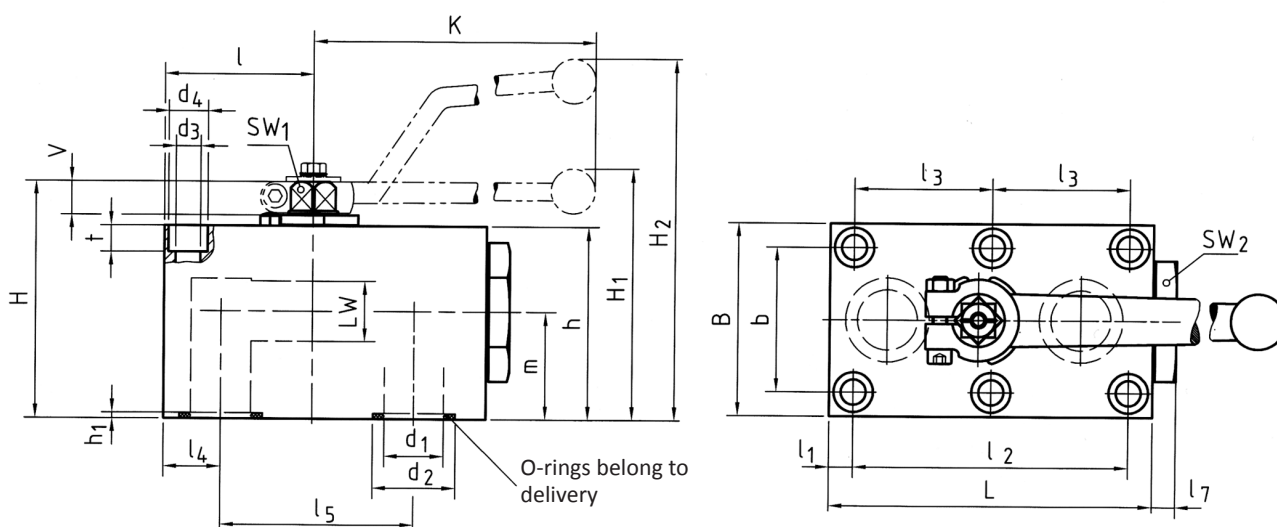


HIGH PRESSURE BALL VALVES FOR MANIFOLD MOUNTING PKH SERIES

420 – 500 BAR Rated

Article no.	Size mm	Max pressure BAR	Weight kg	Price £	Price €
106001	6	500	0.60	ON REQUEST	
9106002	10	500	1.30	ON REQUEST	
9106003	13	420	2.20	ON REQUEST	
9106004	20	420	3.90	ON REQUEST	
9106005	25	420	5.65	ON REQUEST	
106006	32	420	11.10	ON REQUEST	
106007	40	420	19.00	ON REQUEST	
106008	50	420	29.30	ON REQUEST	

Dimensions



Type	DN	I	I1	I2	I3	I4	I5	I7	L	B	b	H	h	m
PKH	6	26	8.5	35	-	8,5	35	6	57	40	27	43	35	19.5
PKH	10	29	7.5	55	-	10	44	10	70	55	40	59	45	24.5
PKH	13	42.5	7.5	83	41.5	16	58	10	98	60	45	69	55	34
PKH	20	51	10	97	48.5	20	69	10	117	70	51	88	70	37.5
PKH	25	62	10	115	57.5	24	81	10	135	80	60	98	80	44.5
PKH	32	75	12	136	68	29	96	10	165	100	78	121	100	54.5
PKH	40	84.5	28.5	112	56	28.5	112	17	200	130	95	131	110	57
PKH	50	106	38	136	68	38	136	15	240	150	112	150	129	71

These products are not 'PED Compliant' for use with GAS

Should you have a GAS application please contact our sales office in order that they can check the PED requirements and offer a CE marked suitable product.

HIGH PRESSURE BALL VALVES FOR MANIFOLD MOUNTING PKH SERIES

420 – 500 BAR Rated



HIGH PRESSURE BALL VALVES

Materials

Body	Steel
Ball	Chromed Steel
Stem Seal	NITRIL (others on request)
Ball Seal	POM-MoS2 (others on request)
Temp. Range	-20 to +100°C

We recommend screws according to DIN 912.
(Fixing screws are not supplied)

Type	Dimension of screws (min)	d3	d4	t	Torque of screws in Nm
PKH-DN6	4 x M6x40 - 8.8	6.5	10.5	6.8	9
PKH-DN10	4 x M8x50 - 8.8	8.4	13.5	8.5	21
PKH-DN13	6 x M8x60 - 10.9	8.4	13.5	7	30
PKH-DN20	6 x M10x80 - 10.9	10.5	16.5	10.5	60
PKH-DN25	6 x M10x90 - 12.9	10.5	16.5	10.5	70
PKH-DN32	6 x M12x110 - 10.9	13	19	12	100
PKH-DN40	6 x M16x120 - 12.9	16.5	25	19	300
PKH-DN50	6 x M20x140 - 10.9	21	31	21.5	500

V	SW1	SW2	K	LW	H1	H2	d1	d2	h1	O-ring	Lever	Weight kg
6	7	19	80	6	-	67	6	11.8	1.9	7x2.5	Zn	0.60
11	9	30	115	10	-	93	9,5	14.9	1.9	10x2.5	Zn	1.30
11	9	32	115	13	-	104	13	24.9	1.9	20x2.5	Zn	2.20
14	14	46	200	20	42	-	20	29	2	23.47x2.62	Zn	3.90
14	14	50	200	25	102	-	25	34.9	2,3	29x3	Zn	5.65
17	17	65	320	32	130	-	32	40	2	34.59x2.62	Al	11.10
17	17	80	320	38	140	-	38	47.7	2,3	42x3	Al	19.00
17	17	90	320	48	159	-	48	59.8	2,3	54x3	Al	29.30

These products are not 'PED Compliant' for use with GAS

Should you have a GAS application please contact our sales office in order that they can check the PED requirements and offer a CE marked suitable product.