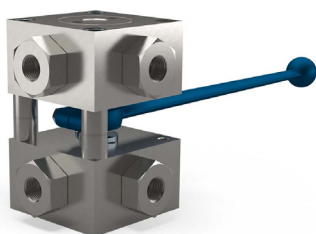
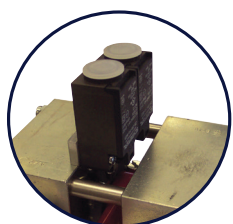




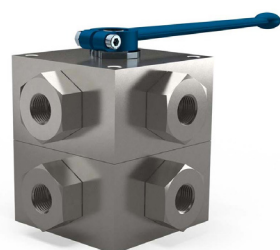
# MULTIWAY BALL VALVE COMBINATIONS 3KH - 4KH SERIES



ASSEMBLED FROM STOCK



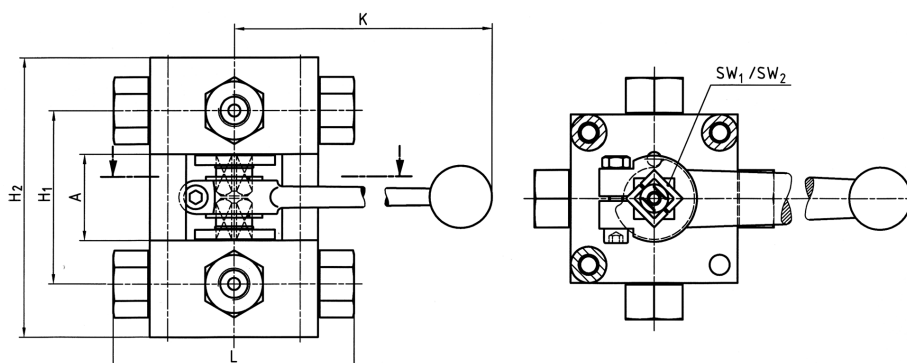
Dual assembly fitted with 2 x position limit switches (typical arrangement)



MADE TO ORDER - DELIVERY 6 - 8 WEEKS

## CENTRAL LEVER

For dual valve operation (lowest cost option)



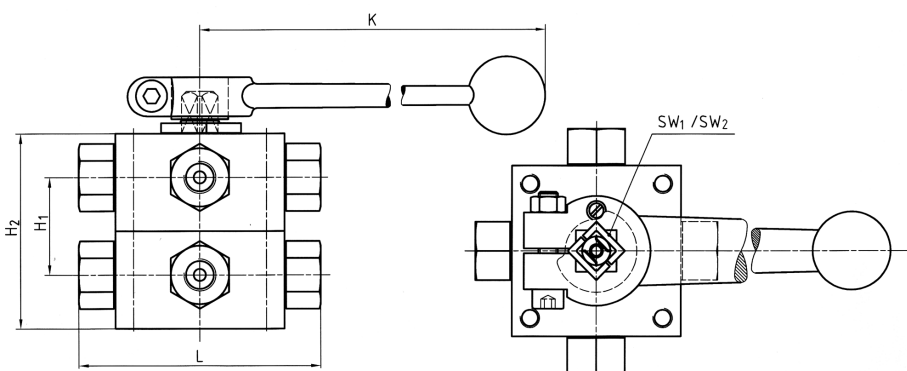
DIN ISO 228 Female thread

Price on Application

Type	DN	L	SW1	SW2	A	H1	H2	K	Lever	Weight kg
3/4KH-G1/8	4	100	12	17	36	72	116	240	Al	3.50
3/4KH-G1/4	6	100	12	17	36	72	116	240	Al	3.50
3/4KH-G3/8	10	115	14	17	38	84	135	320	Al	6.00
3/4KH-G1/2	13	136	14	17	38	96	158	320	Al	10.20
3/4KH-G5/8	16	139	14	17	38	96	158	320	Al	10.20
3/4KH-G3/4	20	154	17	17	46	107	180	320	Al	14.00
3/4KH-G1	25	172	17	17	46	115	210	320	Al	17.50
3/4KH-G1 1/4	25/32	180	17	17	46	115	210	320	Al	18.00
3/4KH-G1 1/2	25/40	180	17	17	46	115	210	320	Al	18.00

## TOP LEVER STACKED

With top lever can be stacked up to 5 valves high



DIN ISO 228 Female thread

Type	DN	L	SW1	SW2	H1	H2	K	Lever	Weight kg
3/4KH-G1/8	4	100	12	17	40	80	320	Al	3.20
3/4KH-G1/4	6	100	12	17	40	80	320	Al	3.20
3/4KH-G3/8	10	115	14	17	50	100	320	Al	5.40
3/4KH-G1/2	13	136	14	17	60	120	320	Al	9.80
3/4KH-G5/8	16	139	14	17	60	120	320	Al	9.80
3/4KH-G3/4	20	154	17	17	67	134	320	Al	13.40
3/4KH-G1	25	172	17	17	82	164	320	Al	16.60
3/4KH-G1 1/4	25/32	180	17	17	82	164	320	Al	17.00
3/4KH-G1 1/2	25/40	180	17	17	82	164	320	Al	17.00

These products are not 'PED Compliant' for use with GAS

Should you have a GAS application please contact our sales office in order that they can check the PED requirements and offer a CE marked suitable product.