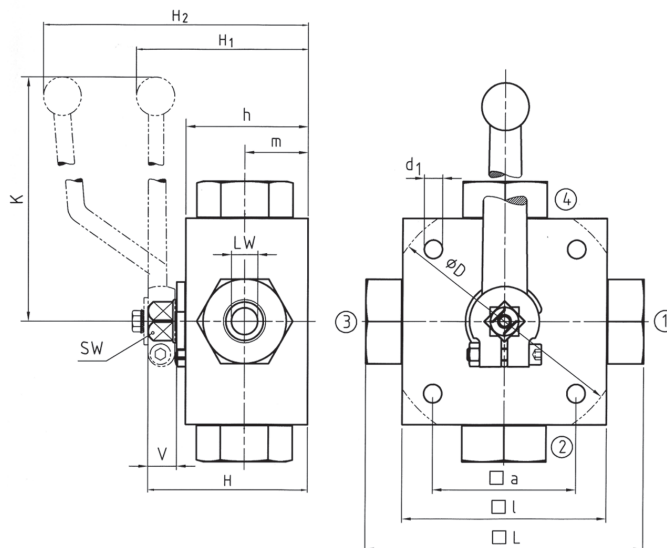


HIGH PRESSURE MULTI-WAY BALL VALVES 4 WAY - 4KH SERIES

500-250 BAR Rated
Threaded Female BSP Parallel

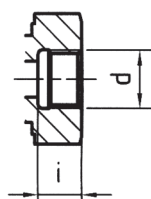


Dimensions

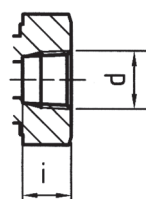


Materials

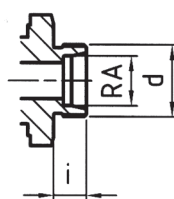
Body	Steel 9SMn28K
Ball	Chromed Steel
Stem Seal	NITRIL (Others On Request)
Ball Seal	POM-MoS2
Temp. Range	-20 to +100°C



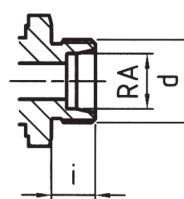
BSP
DIN ISO 228



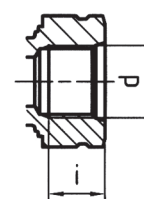
NPT
ANSI B1.20.1



DIN 2353 L



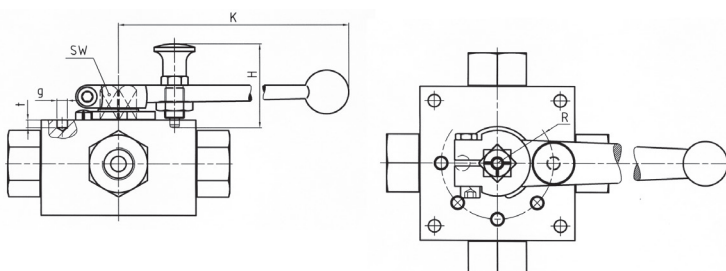
DIN 2353 S



SAE J 514

DIN ISO 228 Female thread

Type	DN	LW _{L/T}	LW _x	L	D	I	a	H	h	m	K	V	SW	i	d	d ₁	H ₁	H ₂	Weight
4KH-G1/8	4	5	4	100	-	70	55	58	40	22	160	14	12	10	G1/8	6.5	-	101	1.60
4KH-G1/4	6	5	4	100	-	70	55	58	40	22	160	14	12	14	G1/4	6.5	-	101	1.60
4KH-G3/8	10	8	7	115	-	80	65	68	50	27	200	14	14	14	G3/8	6.5	72	-	2.80
4KH-G1/2	13	13	10	136	-	100	80	78	60	31	200	14	14	16,3	G1/2	9	82	-	4.90
4KH-G5/8	16	13	10	139	-	100	80	78	60	31	200	14	14	18	G5/8	9	82	-	4.90
4KH-G3/4	20	18	14	154	138	113	85	88	67	36,5	320	16.5	17	18	G3/4	8.5	96	-	6.80
4KH-G1	25	23	17	172	138	119	85	103	82	47.5	320	16.5	17	20	G1	8.5	112	-	8.50
4KH-G1 1/4	25/32	23	17	180	138	119	85	103	82	47.5	320	16.5	17	22	G1 1/4	8.5	112	-	8.80
4KH-G1 1/2	25/40	23	17	180	138	119	85	103	82	47.5	320	16.5	17	24	G1 1/2	8.5	112	-	8.80



Option with snapbolt detent

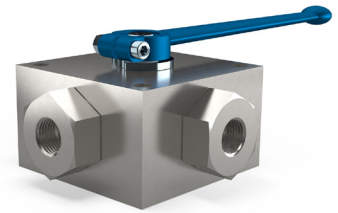
Type	DN	SW	K	H	R	g	t
3/4KH	4-6	12	175	45	20	6	7
3/4KH	8-10	14	200	45	29	6	4
3/4KH	13-16	14	200	45	29	6	4
3/4KH	20	17	240	45	28	6	4
3/4KH	25	17	240	45	28	6	4

These products are not 'PED Compliant' for use with GAS

Should you have a GAS application please contact our sales office in order that they can check the PED requirements and offer a CE marked suitable product.

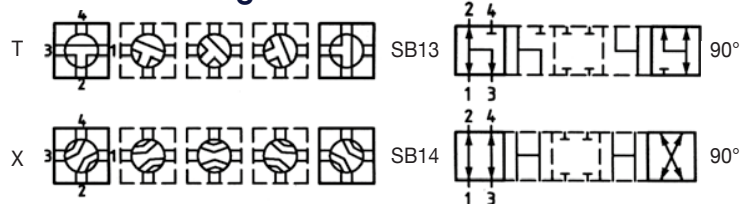
HIGH PRESSURE MULTI-WAY BALL VALVES 4 WAY - 4KH SERIES

500-250 BAR Rated
Threaded Female BSP Parallel

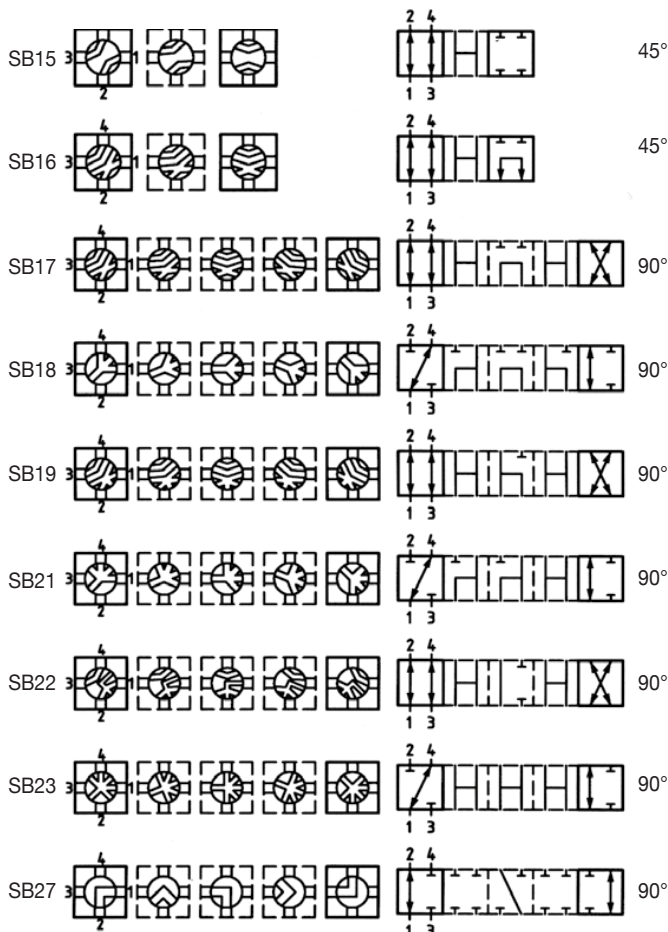


Size	Max pressure BAR	Article no. 'X' Bore	Price £	Price €
1/4"	500	9105042	ON REQUEST	
3/8"	500	9105043	ON REQUEST	
1/2"	400	9105044	ON REQUEST	
3/4"	315	9105045	ON REQUEST	
1"	315	9105046	ON REQUEST	
1 1/4"	315	9105047	ON REQUEST	
1 1/2"	250	9105048	ON REQUEST	

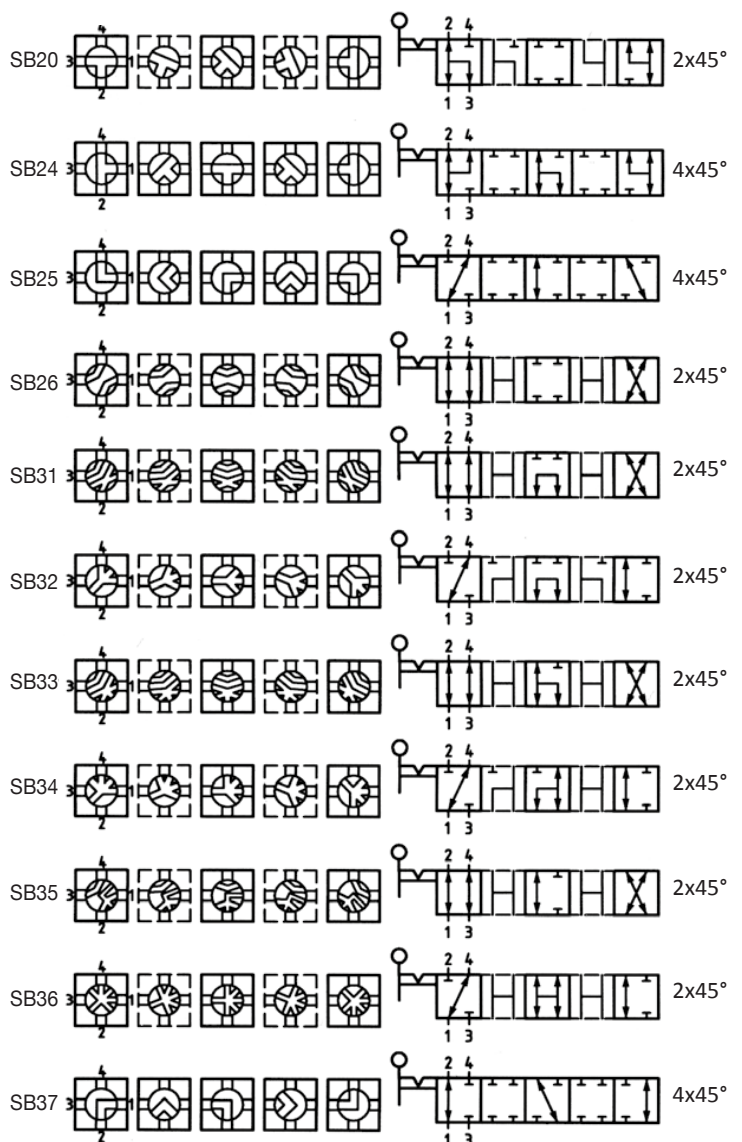
Standard configuration



Alternative configurations available on request



with detent bolt in all permitted positions



These products are not 'PED Compliant' for use with GAS

Should you have a GAS application please contact our sales office in order that they can check the PED requirements and offer a CE marked suitable product.