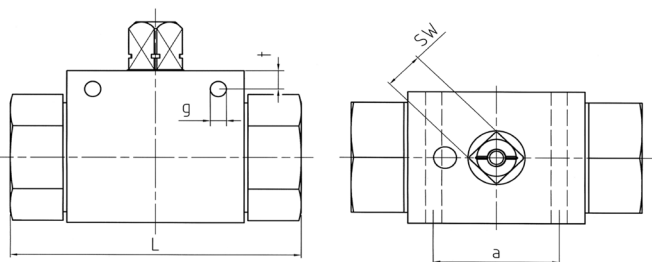


HIGH PRESSURE 2-WAY BALL VALVES CARBON STEEL BKH SERIES

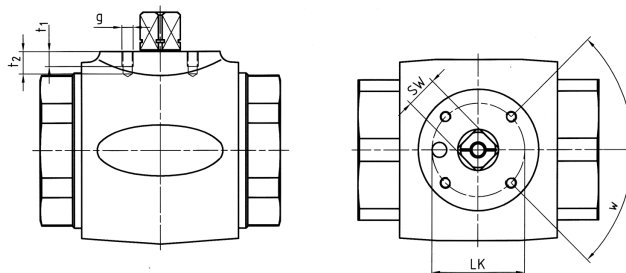


ADDITIONAL COST

Price £	Price €
£9.10	€10.90

With Side Hole Fixing – Drilled at our works

Type	DN	L	SW	a	g	t	Weight without lever	Weight with lever
BKH-G1/8	4	69	9	31	4,3	4,5	0.31	0.40
BKH-G1/4	6	69	9	31	4,3	4,5	0.30	0.39
BKH-G3/8	10	72	9	32	4,3	4	0.44	0.53
BKH-G1/2	13	83	9	32	4,3	4	0.55	0.64
BKH-G1/2	16	83	12	32	5,2	6	0.60	0.69
BKH-G5/8	13	83	9	32	4,3	4	0.51	0.60
BKH-G5/8	16	83	12	32	5,2	6	0.60	0.69
BKH-G3/4	20	95	14	44	6,2	6	1.27	1.49
BKH-G1	25	113	14	44	6,3	6	1.97	2.19
BKH-G1 1/4	25/32	120	14	44	6,3	6	2.10	2.29
BKH-G1 1/2	25/40	130	14	44	6,3	6	2.40	2.59



ADDITIONAL COST

Price £	Price €
£9.10	€10.90

With Drilled Top for Actuation

Type	DN	L	SW	LK	g	t1	t2	w	ISO5211	Weight kg
BKH-G1/8	4	69	9	36	M5	6	7,5	30° *	(F03) *	0,31
BKH-G1/4	6	69	9	36	M5	6	7,5	30° *	(F03) *	0,30
BKH-G3/8	10	72	9	36	M5	7	9	45°	F03	0,44
BKH-G1/2	13	83	9	36	M5	6	8	45°	F03	0,55
BKH-G1/2	16	83	12	42	M5	8	10	45°	F04	0,60
BKH-G5/8	13	83	9	36	M5	6	8	45°	F03	0,51
BKH-G5/8	16	83	12	42	M5	8	10	45°	F04	0,60
BKH-G3/4	20	95	14	50	M6	10	14	45°	F05	1,27
BKH-G1	25	113	14	50	M6	10	12	45°	F05	1,97
BKH-G1 1/4	25/32	120	14	50	M6	10	12	45°	F05	2,10
BKH-G1 1/2	25/40	130	14	50	M6	10	12	45°	F05	2,40

These products are not 'PED Compliant' for use with GAS

Should you have a GAS application please contact our sales office in order that they can check the PED requirements and offer a CE marked suitable product.