

WING LEVER
AVAILABLE
ON REQUEST

HIGH PRESSURE 2-WAY BALL VALVES CARBON STEEL BKH SERIES COMPRESSION END

350 - 500 BAR Rated
Compression Connection – Heavy Series

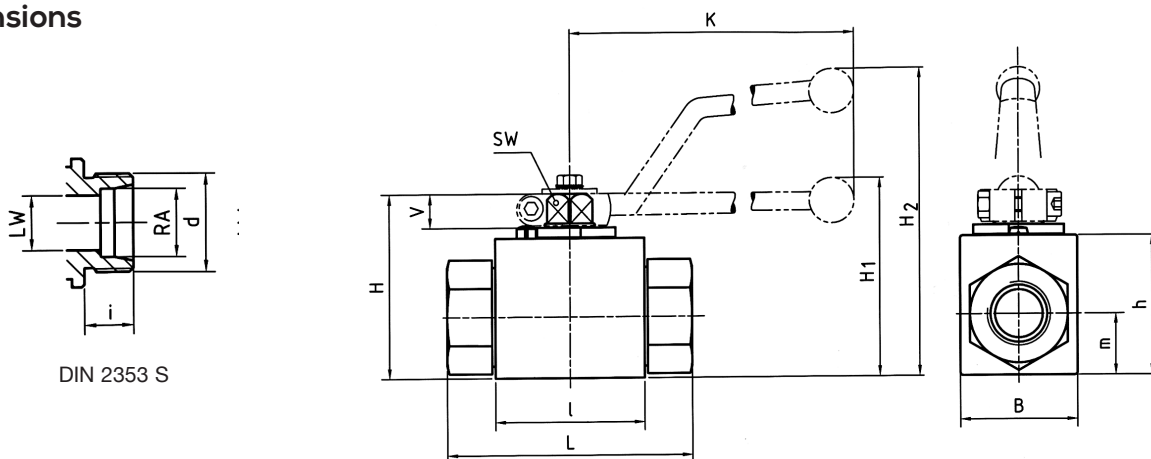
Article no. S series	DN	Size DIN2353-S	Max Pressure BAR	Price £	Price €
BKH8S	4	8S	500	ON REQUEST	
10110S	6	10S	500	ON REQUEST	
10112S	8	12S	500	ON REQUEST	
BKH14S	10	14S	500	ON REQUEST	
10116S	13	16S	500	ON REQUEST	
BKH20S	13	20S	500	ON REQUEST	
BKH20SDN16	16	20S	420	ON REQUEST	
10125S	20	25S	315	ON REQUEST	
BKH30S	25	30S	315	ON REQUEST	
BKH38S	25/32	38S	315	ON REQUEST	

* MAXIMUM PRESSURE IS GOVERNED BY THE FITTING DIN2353.
PLEASE CHECK RATING OF FITTING.

Materials

Body Steel 11SMn28K - Yellow Zinc Passivated
Ball Brass - Mirror Finish Chromed
Stem Seal NITRIL (Others On Request)
Ball Seal POM-MoS2 (Others On Request)
Temp. Range -20 to +100°C

Dimensions



DIN 2353 S

Type	DN	RA	LW	L	I	B	H	h	m	V	SW	K	i	d	H1	H2	Weight
BKH- 8S	4	8	5	73	40	26	47	33	13,5	11	9	115	12	M 16x1,5	-	82	0.38
BKH-10S	6	10	6	73	40	26	47	33	13,5	11	9	115	12	M 18x1,5	-	82	0.39
BKH-12S	8	12	8	76	40	26	47	33	13,5	11	9	115	12	M 20x1,5	-	82	0.39
BKH-14S	10	14	10	80	43	32	52	38	17,5	11	9	115	14	M 22x1,5	-	86	0.50
BKH-16S	13	16	13	86	48	35	54	40	19	11	9	115	14	M 24x1,5	-	89	0.60
BKH-20S	13	20	13	90	48	35	54	40	19	11	9	115	16	M 30x2	-	89	0.60
BKH-20S	16	20	15	90	48	38	63	46	19	13	12	160	16	M 30x2	-	106	0.80
BKH-25S	20	25	20	109	62	49	75	57	24,5	14	14	200	18	M 36x2	79	-	1.55
BKH-30S	25	30	25	120	66	58	83	65	29,5	14	14	200	20	M 42x2	87	-	2.10
BKH-38S	25/32	38	25	124	66	58	83	65	29,5	14	14	200	22	M 52x2	87	-	2.30

These products are not 'PED Compliant' for use with GAS

Should you have a GAS application please contact our sales office in order that they can check the PED requirements and offer a CE marked suitable product.