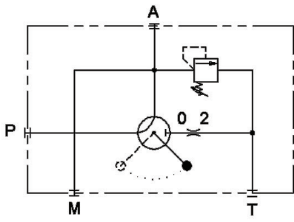
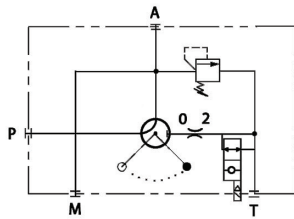


## Safety Blocks SB Series

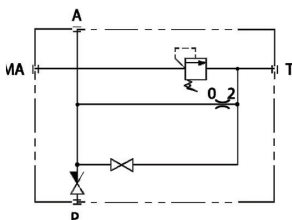
These safety devices, which are essential to preserve the accumulator from phenomena of over-pressure, are provided of a valve of maximum pressure settled in the factory at different values and of a discharge valve which is available in manual and electric version or manual only.



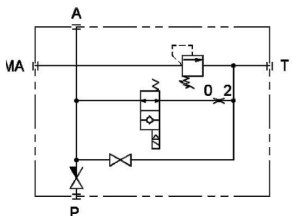
Hydraulic diagram of manual version



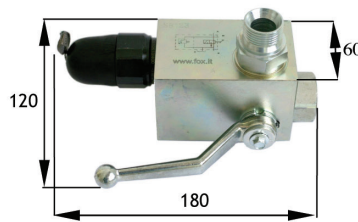
Hydraulic version with manual end electric command



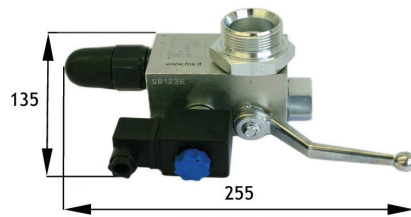
Hydraulic diagram of manual version



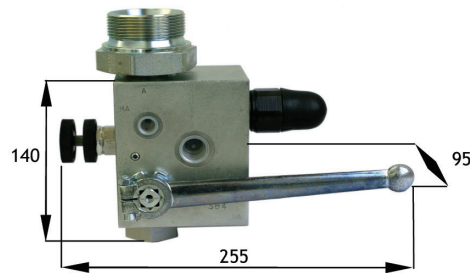
Hydraulic version with manual end electric command



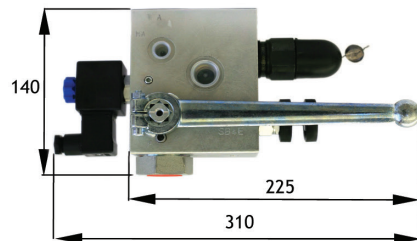
**SB1-2-3**



**SB1-2-3E**



**SB4-5**



**SB4-5E**

### Technical Features:

Max. working pressure: 350 bar

Body: in zinc-coated forged steel

Standard execution:

- Isolation ball valve
- Safety relief valve
- Drain port
- Gauge port
- Electric solenoid valve for accumulator discharge

Working temperature: from -20°C to +80°C

Special execution:

- Safety valve /TÜV test inspected
- SAE flange or CETOP connecting for SB5 and SB6 type

Article No.	Size/Range	Price
<b>SB1</b>	2.5L to 10L	
<b>SB2</b>	2.5L to 10L	
<b>SB3</b>	10L to 50L	
<b>SB4</b>	2.5L to 10L	<b>PRICE ON REQUEST</b>
<b>SB5</b>	20L to 50L	<b>please contact our sales team for a quote on your next accumulator project</b>
<b>SB6</b>	20L to 50L	
<b>SB1E</b>	2.5L to 10L	
<b>SB2E</b>	2.5L to 10L	<b>sales@isisfluid.com</b>
<b>SB3E</b>	10L to 50L	<b>01608 645755</b>
<b>SB4E</b>	2.5L to 10L	
<b>SB5E</b>	20L to 50L	
<b>SB6E</b>	20L to 50L	

Type	Execution	FOX Recommended Accumulators	Hydraulic Connection Accumulator's side	Hydraulic Connection Installation's side	Hole diameter for fluid	Flow rate	Version	Pressure setting for safety valve
<b>SB1</b>	Manual	Sizes from 2.5L to 10L	3/4" BSPM	1/2" BSPF	10 mm	55 l/min at ~10 m/s	Execution with manual command or manual and electric. Standard execution electrovalve NO, 24V.	Indicate the pressure value for safety valve in Bar
<b>SB1E</b>	Electrical		3/4" BSPM	1/2" BSPF	10 mm			
<b>SB2</b>	Manual	Sizes from 10L to 50L	1 1/4" BSPM	1/2" BSPF	10 mm	190 l/min at ~10 m/s	Other execution on request.	
<b>SB2E</b>	Electrical		1 1/4" BSPM	1/2" BSPF	10 mm			
<b>SB3</b>	Manual	Sizes from 2.5L to 10L	2" BSPM	1/2" BSPF	10 mm	190 l/min at ~10 m/s		
<b>SB3E</b>	Electrical		2" BSPM	1/2" BSPF	10 mm			
<b>SB4</b>	Manual	Sizes from 20L to 50L	1 1/4" BSPM	3/4" BSPF	20 mm	295 l/min at ~6 m/s		
<b>SB4E</b>	Electrical		1 1/4" BSPM	3/4" BSPF	20 mm			
<b>SB5</b>	Manual		2" BSPM	3/4" BSPF	20 mm			
<b>SB5E</b>	Electrical		2" BSPM	3/4" BSPF	20 mm			
<b>SB6</b>	Manual		2" BSPM	1 1/2" BSPF	32 mm			
<b>SB6E</b>	Electrical		2" BSPM	1 1/2" BSPF	32 mm			