

Check Valve with SAE Adapter

210 BAR Rated (420 bar on request)
3/4" - 2"

The MHA ZENTGRAF high-pressure check valve RVZ-SAE complies with SAE 3000 (ISO 6162-1). The valve can be flanged directly against a manifold block or between two flanges. The RVZ-SAE valve can be combined with the MHA ZENTGRAF high-pressure flanged ball valve KHZ-SAE.

- 2 bar cracking pressure, others on request
- Sealing options: inlet, outlet, both sided or without sealing
- Threaded pattern on request
- Standardized SAE connection, space-saving, user-friendly, reliable and low-maintenance

SAE 210 BAR

Article no. VALVE	Size DN	Price £	Price €
55425	20	ON REQUEST	
55394	25	ON REQUEST	
55395	32	ON REQUEST	
54350	40	ON REQUEST	
55426	50	ON REQUEST	

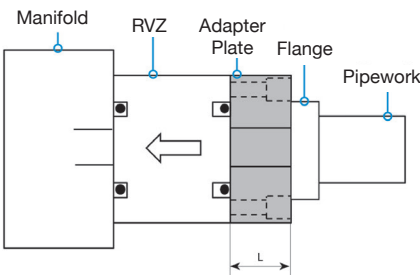
Article no. SAE ADAPTER PLATE	Size DN	Price £	Price €
55443	20	ON REQUEST	
55444	25	ON REQUEST	
55445	32	ON REQUEST	
55446	40	ON REQUEST	
55447	50	ON REQUEST	

SAE420 BAR

Article no. VALVE	Size DN	Price £	Price €
55731	20	ON REQUEST	
55721	25	ON REQUEST	
55716	32	ON REQUEST	
55022	40	ON REQUEST	
55726	50	ON REQUEST	

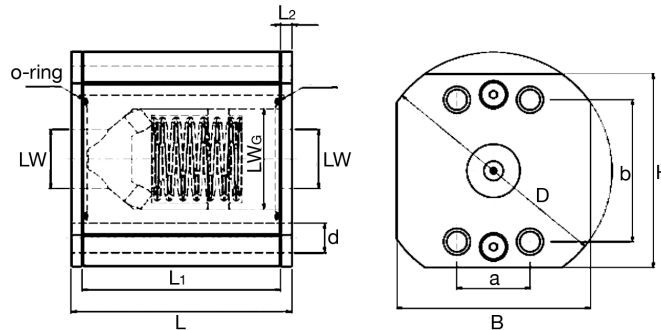
Article no. SAE ADAPTER PLATE	Size DN	Price £	Price €
448354	20	ON REQUEST	
448355	25	ON REQUEST	
448356	32	ON REQUEST	
448357	40	ON REQUEST	
554475	50	ON REQUEST	

SAE Adapter Plate



Materials

Body	Steel
Poppet	Steel
Seat	Polyurethane
O-rings	NBR
Temperature	-20°C to 100°C

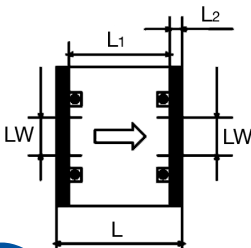


Dimensions (mm)

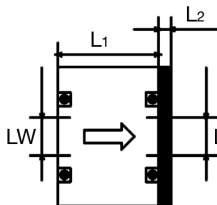
Connection	DN	LW	LW _G	L	L ₁	L ₂	D	B	H	a	b	d	M	t	pÖ (Mpa)	PN (Mpa)	Part No.	
SAE210	15																	on request
SAE210	20																	on request
SAE210	25	17	28	61	53	4	97	70	80	26,2	52,4	11	M10	16	0,2	21	55394	
SAE210	32	22	37,3	82	74	4	98	80	80	30,2	58,7	11	M10	22	0,2	21	55395	
SAE210	40	28	43	89	81	4	118	90	95	35,7	69,9	13	M12	21	0,2	21	54350	
SAE210	50																	on request

Options

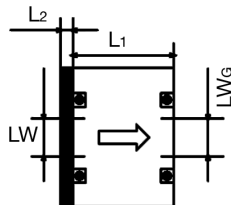
Option A
without seals



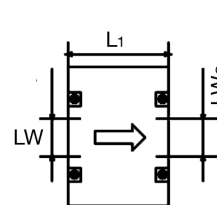
Option B
inlet side sealed



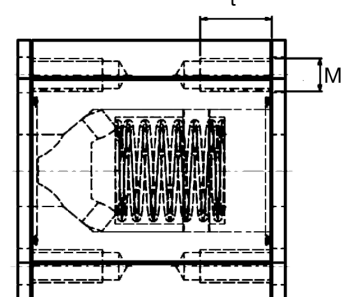
Option C
outlet side sealed



Option D
seals on both sides



Option E
with threaded holes



Valve is supplied with 2 x 'O' rings and 2 x holding plates.
This facilitates all options A - D