

Series R301-40

2-PIECE FULL PORT BALL VALVES

1/4"~3" DN8~DN80

THREADED ENDS

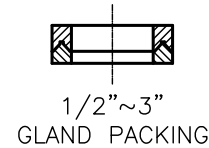
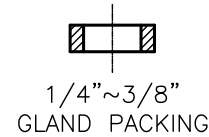
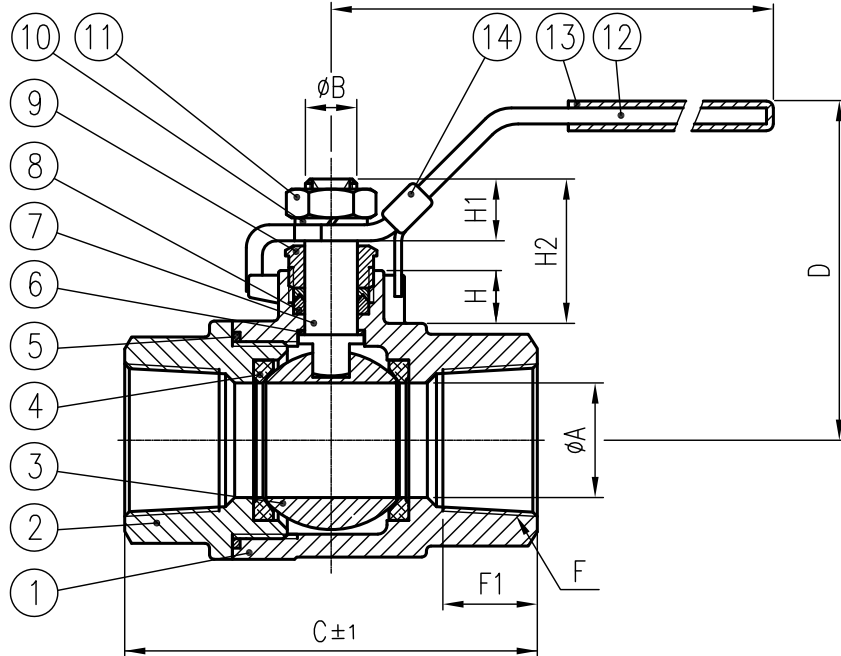
1/4"~1" 2000WOG

1-1/4"~2" 1500WOG

2-1/2"~3" 1000WOG

G Dimensions for PF threaded

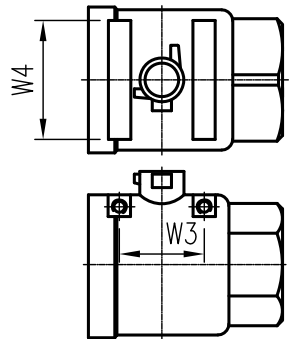
PT/NPT Threaded G use threaded gauge check



MATERIALS LIST			
NO.	PART NAME	QTY	MATERIAL
1	Body	1	CF8M
2	End Cap	1	CF8M
3	Ball	1	SS316/CF8M
4	Seat	2	RTFE
5	Joint Gasket	1	PTFE
6	Thrust Washer	1	PTFE
7	Stem	1	SS316
8	Gland Packing	1Set	PTFE
9	Gland Bush	1	SS304
10	Stem Washer	1	SS304
11	Stem Nut	1	SS304
12	Handle	1	SS304
13	Handle Cover	1	VINYL
14	Locking Device	1	SS304

DIMENSIONS(mm)

SIZE	ØA	B	C	D	E	F1	F	J	G	H	H1	H2	W1	W2	W3	W4
1/4"	11.5	8	55	50	100	13	1/4" PF-NPT-PT	10-24UNC	5	8	9.8	22.3	12.7	28.5		
3/8"	12.5	8	55	50	100	13	3/8" PF-NPT-PT	10-24UNC	5	8	9.8	22.3	12.7	28.5		
1/2"	15	9.5	65	60	130	16	1/2" PF-NPT-PT	10-24UNC	6.5	10.5	11	25.6	12.7	28.5		
3/4"	20	9.5	74.6	64	130	17	3/4" PF-NPT-PT	10-24UNC	6.5	10.5	11	25.6	22.4	35		
1"	25	11	88	71	165	19	1" PF-NPT-PT	10-24UNC	8	11.5	13.5	31.5	23.4	35		
1-1/4"	32	11	110	78	165	22	1-1/4" PF-NPT-PT	1/4-20UNC	8	11.5	13.5	31.5	25.4	38.1		
1-1/2"	38	14	120	86	190	22.5	1-1/2" PF-NPT-PT	1/4-20UNC	9.7	12	15.6	35.1	25.4	38.1		
2"	50	14	140	95	190	26	2" PF-NPT-PT	1/4-20UNC	9.7	9	15.6	32	25.4	38.1		
2-1/2"	65	19	160.6	130	250	31	2-1/2" PF-NPT-PT	1/4-20UNC	12	11	24.5	51.4			59	61
3"	80	19	178	148	250	34	3" PF-NPT-PT	1/4-20UNC	12	10.5	24.5	48			70	71



Top Mounting Location
For 2-1/2"~3"

 緯凡金屬股份有限公司	RELEASED			DRAWING NAME	DRAWING NO.	VERSION	UNIT	SCALE								
	CHECKED			2-PIECE FULL PORT BALL VALVES	HAGU250218001	0	mm	1:1								
	CREATED	ADAM	2025/02/18	DESCRIPTION			PROJECTION									
				Series R301-40				NO.	REV. NO.		REVISION			NAME	DATE	