

SV10-47C

4 Way, 3 Position, Spool, Closed Center, 207 BAR Rated

A solenoid-operated, 4-way, 3-position, direct-acting, spool-type, closed center, screw-in hydraulic cartridge valve.

Materials

Cartridge:

Weight: 0.30 kg. (0.65 lbs.)
Steel with hardened work surfaces. Zinc-plated exposed surfaces.
Buna N O-rings and back-ups standard.

Standard Ported Body:

Weight: 0.36 kg. (0.80 lbs.)
Anodized high-strength 6061 T6 aluminum alloy, rated to 207 bar (3000 psi).
Ductile iron bodies available; dimensions may differ.

Standard Coil:

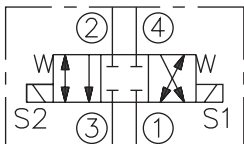
Weight each: 0.27 kg. (0.60 lbs.)
Unitized thermoplastic encapsulated.

Voltage	Hydraforce code	Article no.
CARTRIDGE VERSION		
24V DC	SV10-47C-0-N-24DG	SV1047CC24
110V AC	SV10-47C-0-N-115AG	SV1047CC115
220V AC	SV10-47C-0-N-230AG	SV1047CC230
INLINE WITH BODY 1/4" BSP		
24V DC	SV10-47C-2B-N-24DG	SV1047C2B24
110V AC	SV10-47C-2B-N-115AG	SV1047C2B110
220V AC	SV10-47C-2B-N-230AG	SV1047C2B230
INLINE WITH BODY 3/8" BSP		
24V DC	SV10-47C-3B-N-24DG	SV1047C3B24
110V AC	SV10-47C-3B-N-115AG	SV1047C3B110
220V AC	SV10-47C-3B-N-230AG	SV1047C3B230
with nitril seals		
WITH 'G' DIN CONNECTOR PLUG		

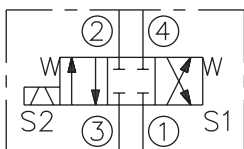
On request - Viton Seals - Screen filter protection - Manual Override
On request - For DC coils with spade or push on connections

Symbols

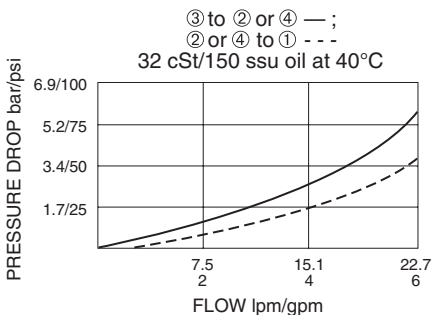
USASI:



ISO:



Performance (Cartridge Only)



Dimensions

