

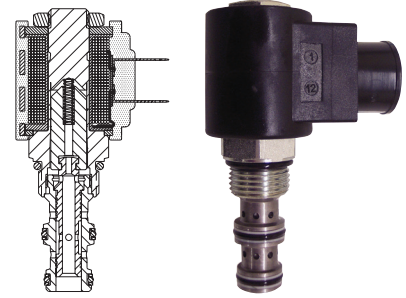
# SV08-31

3 Way, Spool, 207 BAR Rated

A solenoid-operated, three-way, direct-acting, spool-type, screw-in hydraulic cartridge valve.

Voltage	Hydraforce code	Article no.
<b>CARTRIDGE VERSION</b>		
24V DC	SV08-31-0-N-24DG	<b>SV0831C24</b>
110V AC	SV08-31-0-N-115AG	<b>SV0831C115</b>
220V AC	SV08-31-0-N-230AG	<b>SV0831C230</b>
<b>INLINE WITH BODY 1/4" BSP</b>		
24V DC	SV08-31-2B-N-24DG	<b>SV08312B24</b>
110V AC	SV08-31-2B-N-115AG	<b>SV08312B110</b>
220V AC	SV08-31-2B-N-230AG	<b>SV08312B230</b>
<b>INLINE WITH BODY 3/8" BSP</b>		
24V DC	SV08-31-3B-N-24DG	<b>SV08313B24</b>
110V AC	SV08-31-3B-N-115AG	<b>SV08313B110</b>
220V AC	SV08-31-3B-N-230AG	<b>SV08313B230</b>
<b>with nitril seals</b>		
<b>WITH 'G' DIN CONNECTOR PLUG</b>		

On request - Viton Seals - Screen filter protection - Manual Override  
 On request - For DC coils with spade or push on connections



## Materials

### Cartridge:

Weight: 0.13 kg. (0.28 lbs.)  
 Steel with hardened work surfaces. Zinc-plated exposed surfaces.  
 Buna N O-rings and back-ups standard.

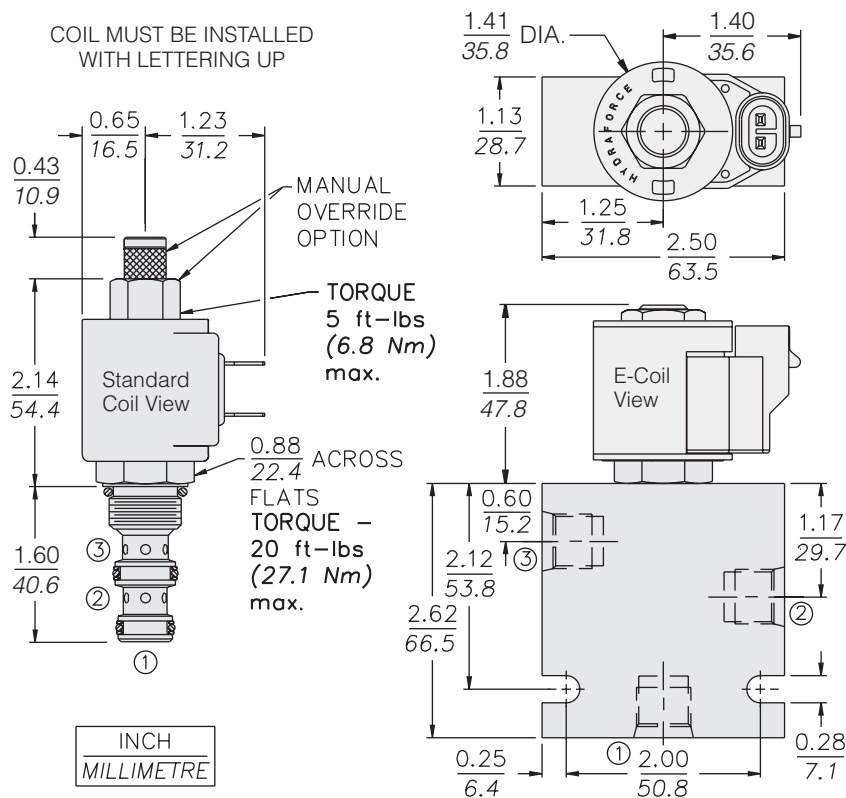
### Standard Ported Body:

Weight: 0.27 kg. (0.60 lbs.)  
 Anodized high-strength 6061 T6 aluminum alloy, rated to 207 bar (3000 psi).  
 Ductile iron bodies available; dimensions may differ.

### Standard Coil:

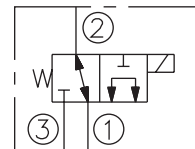
Weight: 0.11 kg. (0.25 lbs.)  
 Unitized thermoplastic encapsulated.

## Dimensions



## Symbols

### USASI/ISO:



## Performance (Cartridge Only)

