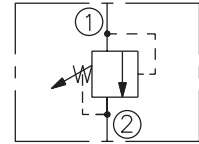
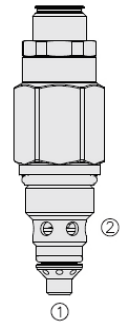


RVD58-20

Relief, Direct-Acting Poppet, High Pressure
345 bar (5000 psi) Rated

The RVD58-20 is a screw-in, cartridge style, direct acting poppet type relief valve intended for use as a pressure limiting device for common hydraulic circuit protection.



Porting	Hydraforce code	Article no.	Spring Options
INLINE 3/8" BSP	RVD58-20A-3BD-P-46	RVD5820A3BD46	* suffix with 8 = 13.7 to 55.1 BAR 30 = 55.1 to 206.8 BAR 50 = 206.8 to 350 BAR

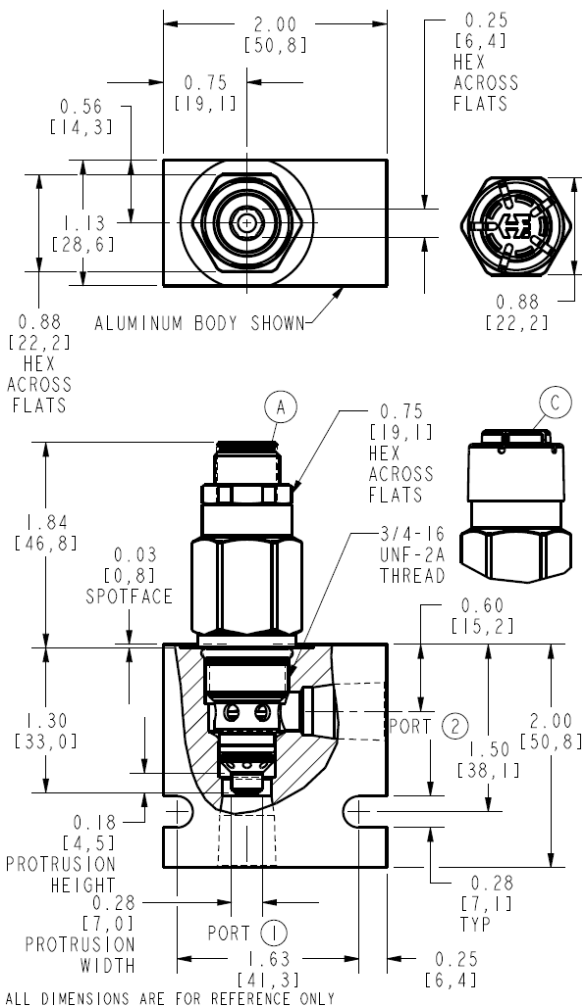
with Polyurethane seals

- Standard** - with 1/4" HEX ALLEN HEAD 'A'
- On request** - 1 1/2" dia alum knob 'B'
- Option 'A' with cover cap 'C'
- Factory Set - Non Adjustable 'F'
- Factory Set - Hidden Adjustment 'H'
- Lockwire Holes 'L'

Dimensions

INCH
[mm]

OUTLINE



Materials

Cartridge:

Steel with hardened work surfaces.

Ported Body:

Weight: 0.161 kg (0.355 lb). Anodized, high-strength aluminum body rated to 207 bar (3000 psi).

Performance

