

# PR08-32

## Pressure Reducing/Relieving 207 BAR Rated

A screw-in, cartridge-style, direct-acting, spool-type, hydraulic pressure reducing/relieving valve with internal pilot and internal spring chamber drain, designed to act as a pressure-regulating device for secondary circuits. It is intended for use in stable input flow circuits.

### Materials

#### Cartridge:

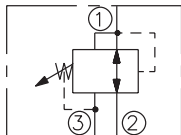
Weight: 0.25 kg. (0.55 lbs.)  
Steel with hardened work surfaces.  
Zinc-plated exposed surfaces.  
Buna N O-rings and back-ups standard.  
Anodized aluminum knob.

#### Standard Ported Body:

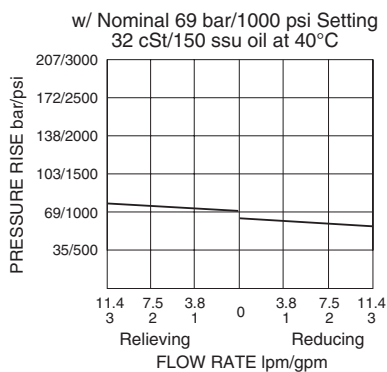
Weight: 0.27 kg. (0.60 lbs.)  
Anodized high-strength 6061 T6 aluminum alloy, rated to 207 bar (3000 psi).  
Ductile iron bodies available; dimensions may differ.

### Symbols

#### USASI/ISO:



### Performance



Porting	Hydraforce code	Article no.	Spring Options
Cartridge Version	PR08-32A-0-N*	PR0832AC*	* suffix with 3 = 3.4 TO 20.7 BAR
INLINE 1/4" BSP	PR08-32A-2B-N*	PR0832A2B*	6 = 10.4 TO 41.4 BAR 12 = 20.7 TO 82.8 BAR
INLINE 3/8" BSP	PR08-32A-3B-N*	PR0832A3B*	22 = 34.5 TO 151 BAR

**with nitril seals / Viton on request**

- Standard** - with 1/4" HEX ALLEN HEAD 'A'
- On request** - 1 1/2" dia alum knob 'B'  
Option 'A' with cover cap 'C'  
Factory Set - Non Adjustable 'F'  
Factory Set - Hidden Adjustment 'H'  
Lockwire Holes 'L'

### Dimensions

