

# FD52-45

**Flow Divider/cominer, Heavy Duty, Multifunction, 5,000 PSI Rated**

A heavy duty, multifunction, screw-in, cartridge-style, spool-type flow divider/combiner.

Porting	Hydraforce code	Article no.	Dividing/Combining Ratio
Cartridge Version	FD52-45-0-P-*	FD52450C*	* suffix with 44 = 50:50 rated / 60 lpm input
INLINE SAE 12	FD52-45-6BD-P*	FD524512T*	66 = 50:50 rated / 90 lpm input

**with polyurethane seals**

## Materials

### Cartridge:

Weight: 0.28 kg. (0.61 lbs.)  
Steel with hardened work surfaces;  
Zinc-plated exposed surfaces.  
Buna N O-rings and polyester elastomer back-ups standard.

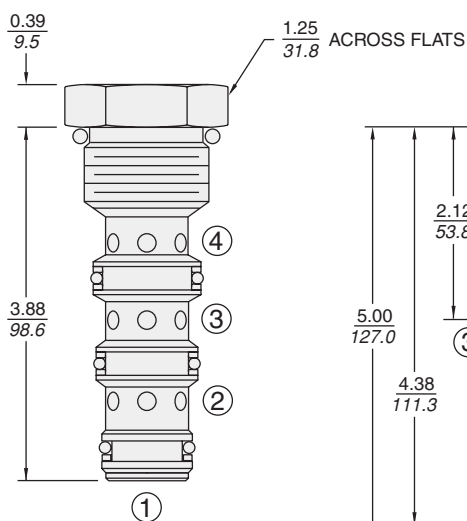
### Special Ported Body:

Ductile iron body required for operation over 207 bar (3000 psi). Aluminum bodies are available for lower pressure operation.

## Dimensions

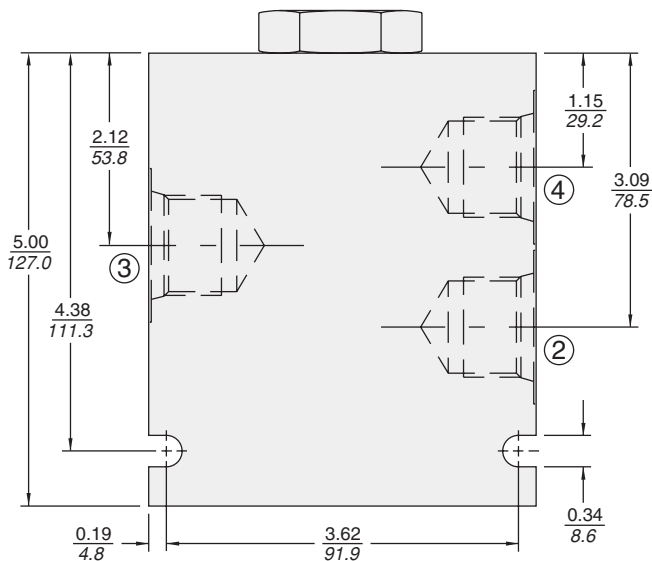
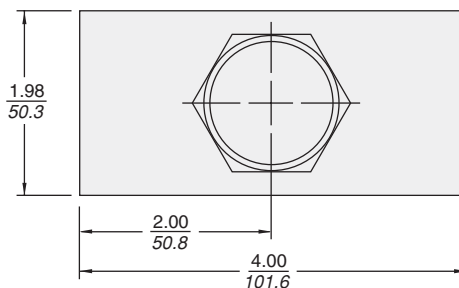
INCH  
MILLIMETRE

INSTALLATION TORQUE:  
73-77 ft-lbs (99-104 Nm)



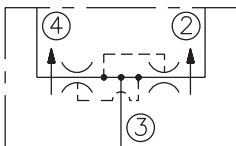
PORT ① IS NOT USED

Body Dimensions shown are for either Ductile Iron or Aluminum

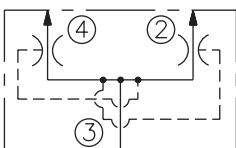


## Symbols

### USASI:



### ISO:



## Performance

Pressure Drop vs. Inlet Flow  
③ to ② and ④  
32 cSt/150 ssu oil at 40°C

