



SP08-47D

4 Way, 3 Position, Motor Spool, 207 BAR Rated

A proportional solenoid-operated, four-way, three-position, spool-type, motor spool, screw-in hydraulic cartridge valve.

Voltage	Hydraforce code	Article no.
CARTRIDGE VERSION		
24V DC	SP08-47D-0-N-24DG	SP0847DC24
INLINE WITH BODY 1/4" BSP		
24V DC	SP08-47D-2B-N-24DG	SP0847D2B24
INLINE WITH BODY 3/8" BSP		
24V DC	SP08-47D-3B-N-24DG	SP0847D3B24
with nitril seals		
WITH 'G' DIN CONNECTOR PLUG		

On request - Viton Seals - Screen filter protection - Manual Override
 On request - For DC coils with spade or push on connections

Materials

Cartridge:

Weight: 0.13 kg. (0.28 lbs.)
 Steel with hardened work surfaces.
 Zinc-plated exposed surfaces.
 Buna N O-rings and back-ups std.

Standard Ported Body:

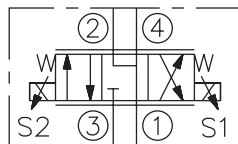
Weight: 0.18 kg. (0.40 lbs.)
 Anodized highstrength 6061 T6 aluminum alloy, rated to 207 bar (3000 psi).
 Ductile iron bodies available; dimensions may differ.

Standard Coil: 2 Required.

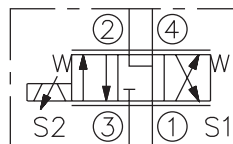
Weight each: 0.11 kg. (0.25 lbs.)
 Unitized thermoplastic encapsulated.

Symbols

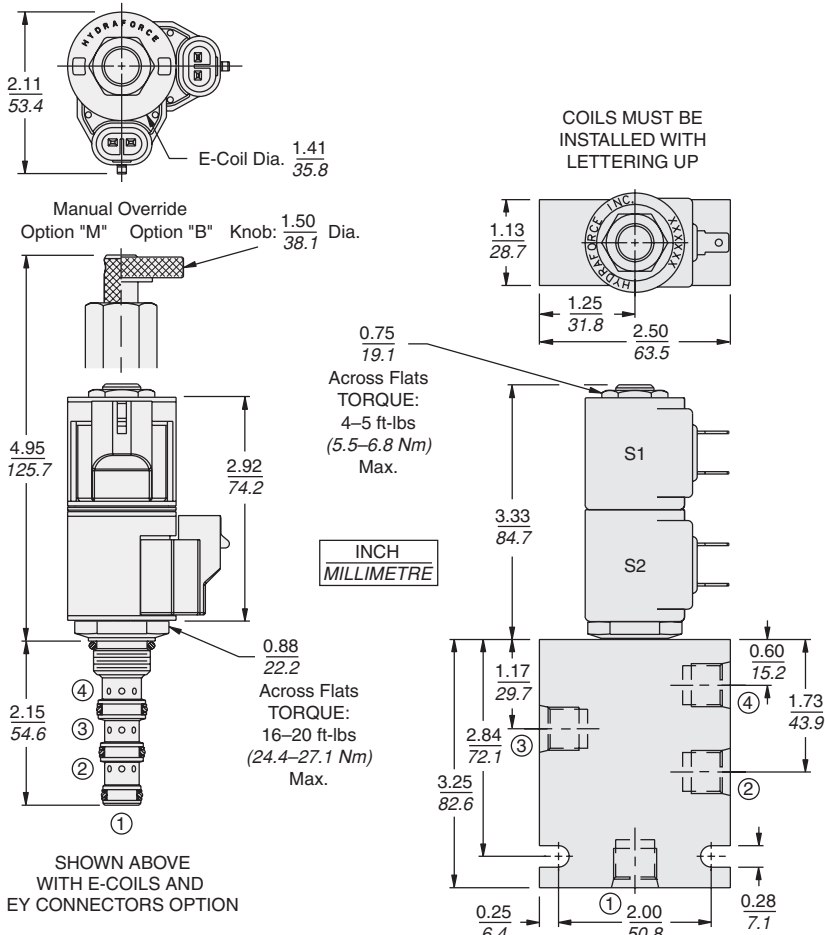
USASI:



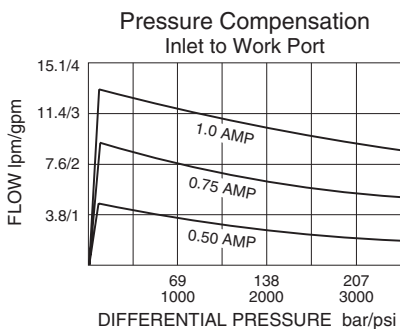
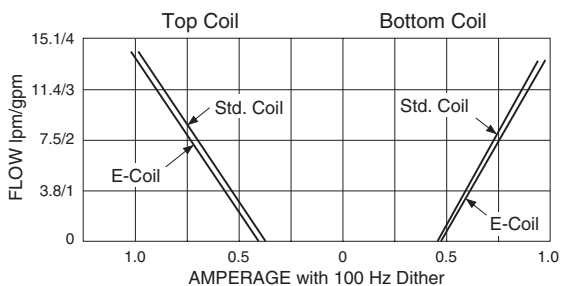
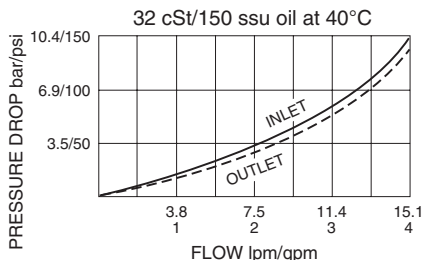
ISO:



Dimensions



Performance



Please contact our technical sales team for electronic controller options