

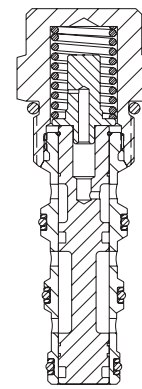
PD10-45

Piloted 2-Way Spool
207 BAR Rated

A screw-in, cartridge-style, pilot-operated, spool-type, hydraulic directional valve for two-way circuits requiring remote pilot actuation and vented spring chamber.

Porting	Hydraforce code	Article no.	Bias Spring Options
Cartridge Version	PD10-45-0-N*	PD10450C*	* suffix with
INLINE 1/4" BSP	PD10-45-2B-N*	PD10452B*	60 = 4.1 BAR (60 PSI) 110 = 7.6 BAR (110 PSI) 170 = 11.7 BAR (170 PSI)
INLINE 3/8" BSP	PD10-45-3B-N*	PD10453B*	

with nitril seals / Viton on request



DIRECTIONAL VALVES



HYDRAFORCE

Materials

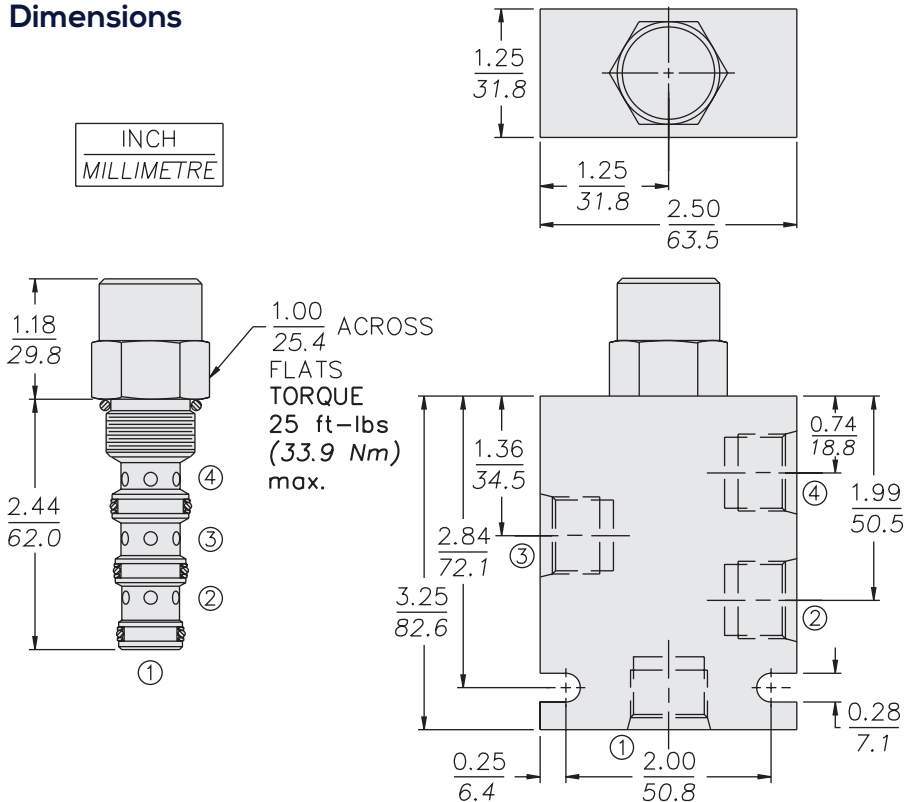
Cartridge:

Weight: 0.16 kg. (0.35 lbs.)
Steel with hardened work surfaces.
Zinc-plated exposed surfaces.
Buna N O-rings and polyester elastomer back-ups standard.

Standard Ported Body:

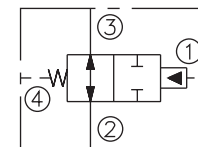
Weight: 0.34 kg. (0.75 lbs.)
Anodized highstrength 6061 T6 aluminum alloy, rated to 207 bar (3000 psi).
Ductile iron bodies available; dimensions may differ.

Dimensions

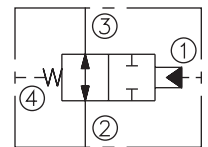


Symbols

USASI:



ISO:



Performance

