

# EP12-S35

## Piloted Spool-Type Logic Element 207 BAR Rated

A spool-type, screw-in, cartridge-style, hydraulic directional element, with multifunction potential when used with other directional, pressure, or flow control devices.



Porting	Hydraforce code	Article no.	Spring Options
			* suffix with
			<b>10</b> = 0.7 BAR (10 PSI)
			<b>80</b> = 5.52 BAR (80 PSI)
			<b>100</b> = 7 BAR (100 PSI)
			<b>160</b> = 11 BAR (160 PSI)
			<b>230</b> = 15.9 BAR (230 PSI)
<b>with nitril seals / Viton on request</b>			

### Materials

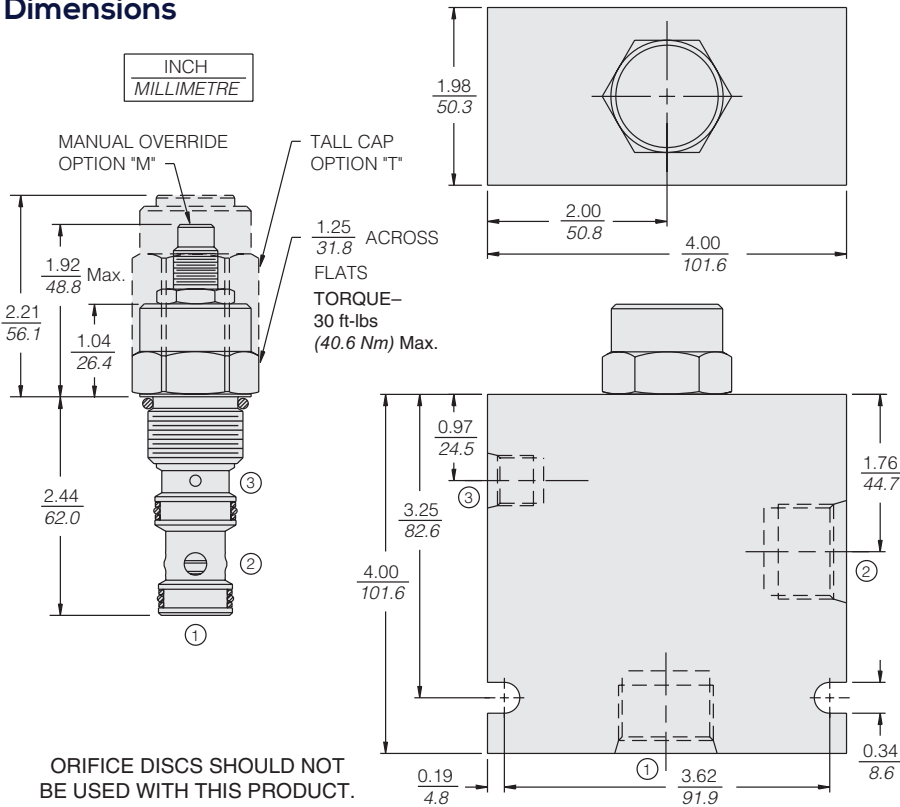
#### Cartridge:

Weight: 0.23 kg. (0.5 lbs.)  
Steel with hardened work surfaces.  
Zinc-plated exposed surfaces.  
Buna N O-rings and polyester elastomer back-ups standard.

#### Standard Ported Body:

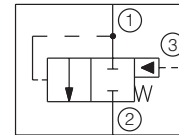
Weight: 1.13 kg. (2.5 lbs.)  
Anodized highstrength  
6061 T6 aluminum alloy,  
rated to 207 bar (3000 psi).  
Ductile iron bodies available;  
dimensions may differ.

### Dimensions

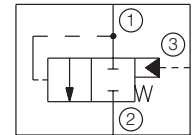


### Symbols

#### USASI:



#### ISO:



### Performance

