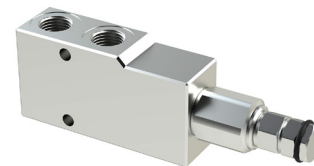


VCCL SINGLE COUNTERBALANCE VALVES

for Closed Centre



OLEOWEB
Valves and solutions

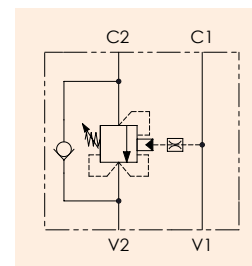
HYDRAULIC VALVES

Article no.	Size
VCCL140	BSPP 1/4"
VCCL380	BSPP 3/8"
VCCL120	BSPP 1/2"

Ordering code

VCCL - X - Y - K - I

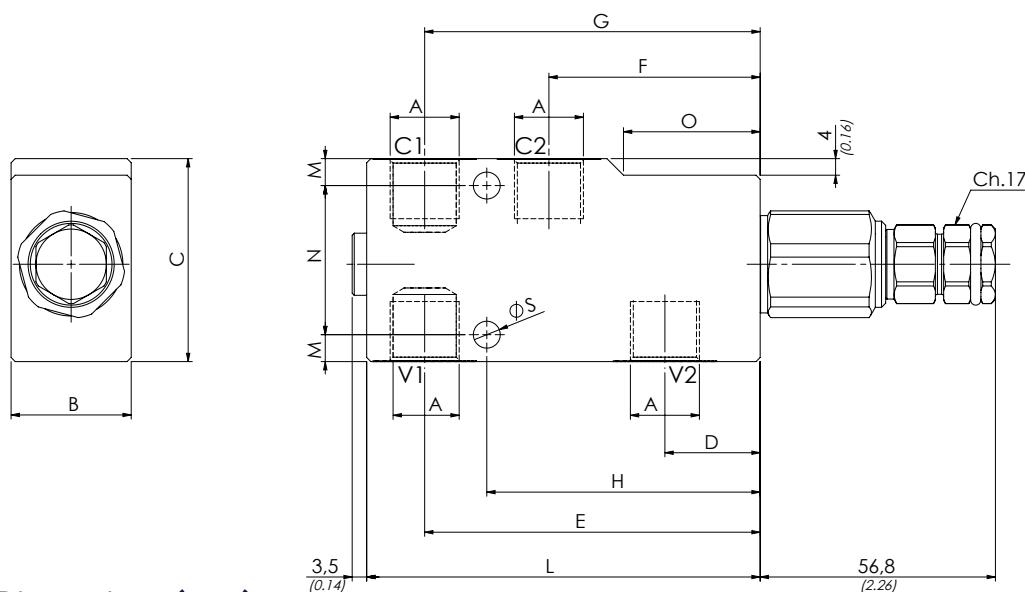
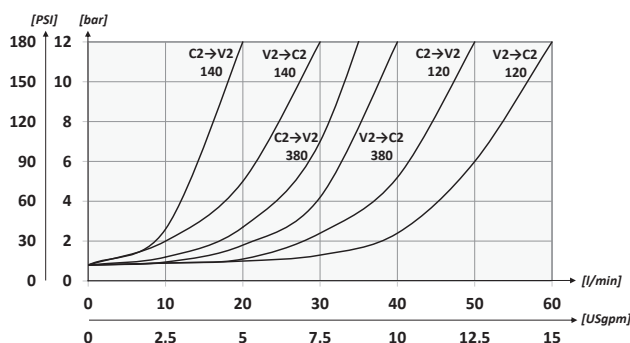
X	Size BSPP	Y	Spring bar	Pressure increase	Std. setting (Q=5 l/min)	K	Material	I	Pilot ratio
140	1/4	1	30/210	70 bar/turn	200 bar	S	Steel body	/	1:4.25 Standard
380	3/8	2	60/350	120 bar/turn	350 bar			8	1:8.75
120	1/2								



Technical data

Mineral oil	ISO 6743/4 (DIN 51524)
Oil viscosity	15-250 mm ² /s (15 to 250 cSt)
Max contamination index	ISO 4406:1999 Classe 18/16/13
Oil temperature	-20°C to +80°C -4°F to +176°F
Ambient temperature	-20°C to +50°C -4°F to +122°F
Leakage@46cSt & 200 bar	0,015 in ³ /min - 5 drops/min
It is necessary a filter is used to protect the valve (advised filtration 15 µm)	

Pressure Drop



Dimensions (mm)

Code	A	Max Flow l/min	Max pressure bar	B	C	D	E	F	G	H	L	M	N	O	S	Weight kg
VCCL140	BSPP 1/4	30	350	29	49	23	81	51	81	66	95	6.5	36	33	6.5	1.02
VCCL380	BSPP 3/8	40	350	29	49	23	81	51	81	66	95	6.5	36	33	6.5	0.98
VCCL120	BSPP 1/2	60	350	29	59	21	84	51	84	67.5	100	9.5	40	33	6.5	1.15