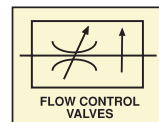


PRESSURE COMPENSATED NEEDLE VALVES SERIES FT270

250 BAR Rated valve - Pressure compensation stable up to 210 BAR

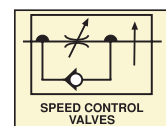
DOUBLE ACTING flow control in both directions
(pressure compensated in one direction only)

Article no.	Size BSP	Max Pressure BAR	Max Flow LPM
205100	1/4"	210	12
205101	3/8"	210	25
205102	1/2"	210	50
205103	3/4"	210	80
205104	1"	210	135



SINGLE ACTING with free reverse flow

Article no.	Size BSP	Max Pressure BAR	Max Flow LPM
205110	1/4"	210	12
205111	3/8"	210	25
205112	1/2"	210	50
205113	3/4"	210	80
205114	1"	210	135



Panel mounting nuts - STEEL

Article no.	Size
207003	1/8"
207004	1/4"
207005	3/8"
207006	1/2"
207008	3/4"
207009	1"



Materials

Body	Steel 9SMn28K
Stem	Steel
Stem seal	NITRIL (Others on request)
Temp. range	-20 to +100°C
Control knob	Aluminium
Thread	BSPP Female

Dimensions (mm)

Size	B	C	D	E	F	G	H	CH	WEIGHT kg
1/4"G	12.5	94	81.5	88.5	27	15	M20x1	30	0.58
3/8"G	13	110.5	94.5	103	33	17	M25x1	35	0.94
1/2"G	15.5	137	112	122	37	18	M30x1.5	45	1.83
3/4"G	17	163	138	150	47	24	M40x1.5	55	3.35
1"G	21	214	175	192	58	32	M50x1.5	70	7.00

