

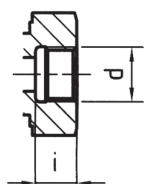
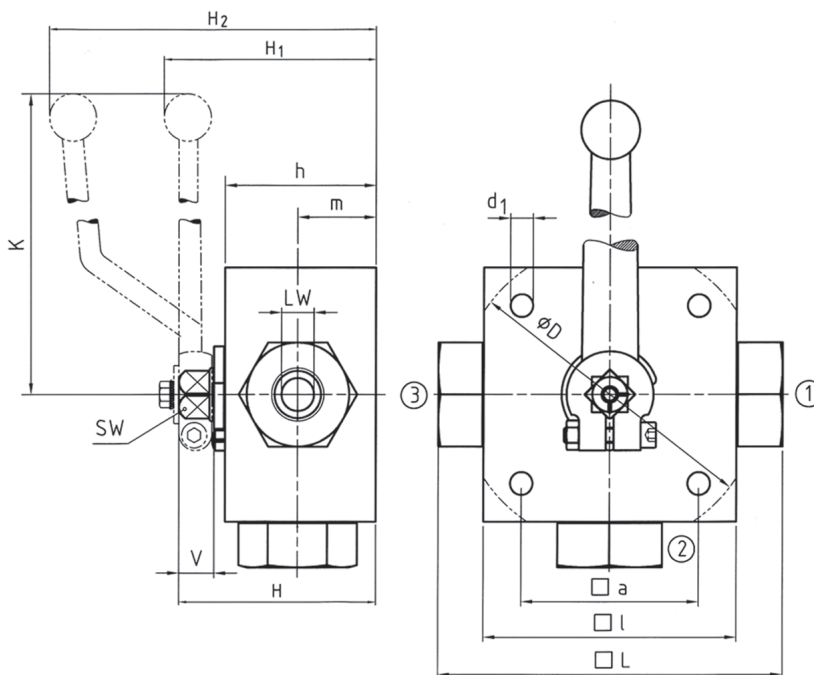
HIGH PRESSURE MULTIWAY BALL VALVE 3-WAY 3KH SERIES

500-250 BAR Rated
Threaded Female BSP Parallel

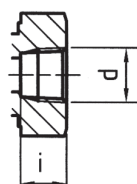


MHA ZENTGRAF
FlowControl Technology

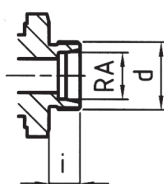
Dimensions



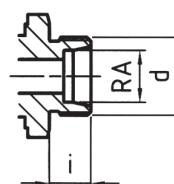
BSP
DIN ISO 228



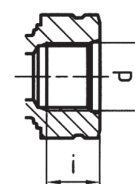
NPT
ANSI B1.20.1



DIN 2353 L



DIN 2353 S



SAE J 514

DIN ISO 228 Female thread

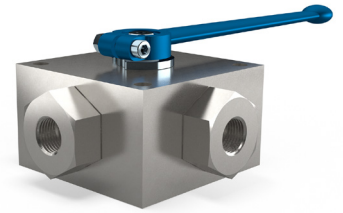
Type	DN	LW	L	D	I	a	H	h	m	K	V	SW	i	d	d ₁	H ₁	H ₂	Weight
3KH-G1/8	4	5	100	-	70	55	58	40	22	160	14	12	10	G1/8	6.5	-	101	1.60
3KH-G1/4	6	5	100	-	70	55	58	40	22	160	14	12	14	G1/4	6.5	-	101	1.60
3KH-G3/8	10	8	115	-	80	65	68	50	27	200	14	14	14	G3/8	6.5	72	-	2.70
3KH-G1/2	13	13	136	-	100	80	78	60	31	200	14	14	16,3	G1/2	9	82	-	4.90
3KH-G5/8	16	13	139	-	100	80	78	60	31	200	14	14	18	G5/8	9	82	-	4.90
3KH-G3/4	20	18	154	138	113	85	88	67	36.5	320	16.5	17	18	G3/4	8.5	96	-	6.70
3KH-G1	25	23	172	138	119	85	103	82	47.5	320	16.5	17	20	G1	8.5	112	-	8.30
3KH-G1 1/4	25/32	23	180	138	119	85	103	82	47.5	320	16.5	17	22	G1 1/4	8.5	112	-	8.50
3KH-G1 1/2	25/40	23	180	138	119	85	103	82	47.5	320	16.5	17	24	G1 1/2	8.5	112	-	8.50

These products are not 'PED Compliant' for use with GAS

Should you have a GAS application please contact our sales office in order that they can check the PED requirements and offer a CE marked suitable product.

HIGH PRESSURE MULTIWAY BALL VALVE 3-WAY 3KH SERIES

500-250 BAR Rated
Threaded Female BSP Parallel



MHA ZENTGRAF
FlowControl Technology

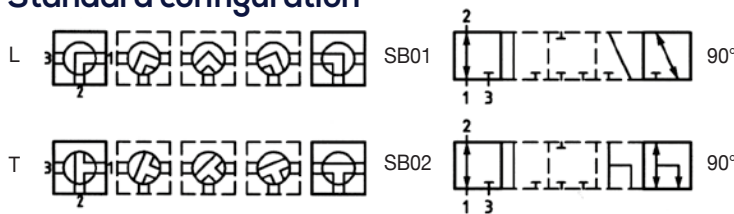
HIGH PRESSURE BALL VALVES

Article no. 'L' Bore	Size	Max pressure BAR	Article no. 'T' Bore	Size	Max pressure BAR
9105002	1/4"	500	9105012	1/4"	500
9105003	3/8"	500	9105013	3/8"	500
9105004	1/2"	400	9105014	1/2"	400
9105005	3/4"	315	9105015	3/4"	315
105006	1"	315	105016	1"	315
105007	1 1/4"	315	105017	1 1/4"	315
105008	1 1/2"	250	105018	1 1/2"	250

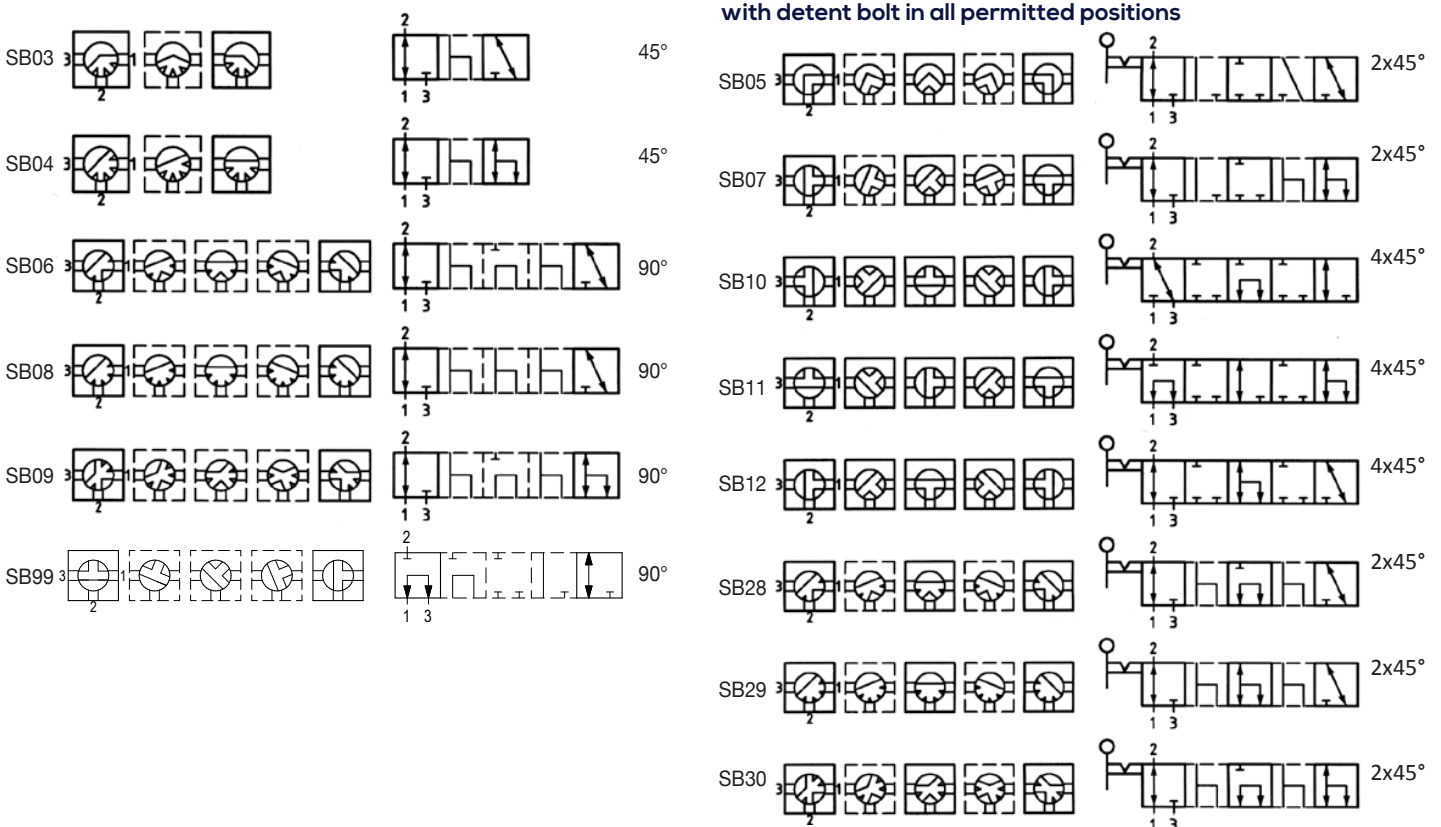
Materials

Body	Steel 9SMn28K
Ball	Chromed Steel
Stem Seal	NITRIL (others on request)
Ball Seal	POM-MoS2
Temp. Range	-20 to +100°C

Standard configuration



Alternative configurations available on request



These products are not 'PED Compliant' for use with GAS

Should you have a GAS application please contact our sales office in order that they can check the PED requirements and offer a CE marked suitable product.