

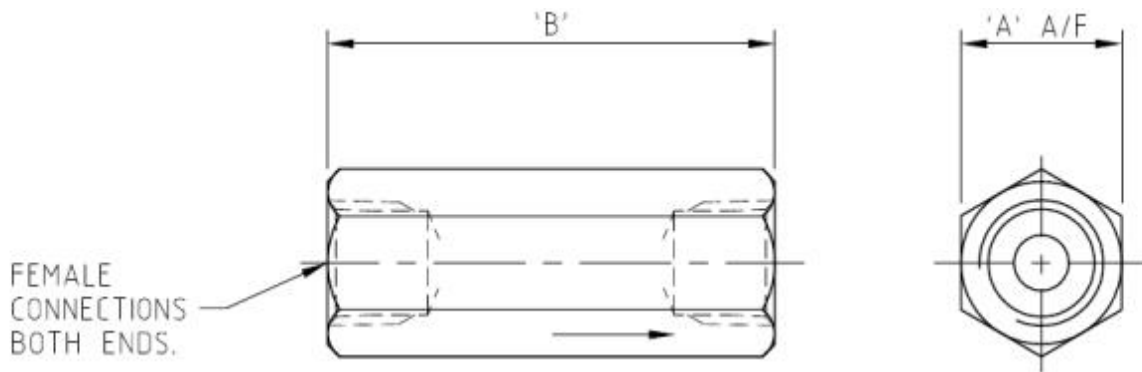
<b>Product Data Sheet</b>	<b>Check Valve</b>
---------------------------	--------------------



**Key features**

- In-line poppet type
- Allows flow in one direction only, closing when flow reverses
- Max temperature 200°C, 240°C with PEEK
- VITON 90 seal as standard. PEEK & KALREZ also available
- NPT female X female connections

**General Arrangement Drawing**



Part No	Thread Size	'B'	'A' A/F	Max Pressure	Cracking Pressure	Weight
CV25	1/4"	2 5/16"	0.87"	6,000 PSI	7 PSI	0.2kg
CV25/HP	1/4"	2 5/16"	0.87"	10,000 PSI	7 PSI	0.3kg
CV38	3/8"	2 1/2"	1.1"	6,000 PSI	7 PSI	0.3kg
CV38/HP	3/8"	2 1/2"	1.1"	10,000 PSI	7 PSI	0.8kg
CV50	1/2"	3 1/8"	1.1"	6,000 PSI	7 PSI	0.2kg
CV50/HP	1/2"	3 1/8"	1.1"	10,000 PSI	7 PSI	0.3kg
CV75/3K	3/4"	3 5/8"	1.3"	3,000 PSI	4 PSI	0.3kg
CV75	3/4"	3 5/8"	1.5"	6,000 PSI	4 PSI	0.8kg
CV10/3K	1"	4 3/16"	1.875"	3,000 PSI	4 PSI	0.9kg
CV10	1"	4 3/16"	1.875"	6,000 PSI	4 PSI	0.9kg

Note: CV50 & CV50/HP are of a two-piece poppet design.

## **Material Options**

S - 316 Stainless Steel  
M - Monel 400  
HC - Hastalloy C276  
DUP - Duplex SS VNS31803  
Others available

## **Options**

PK - Available for 1/4", 1/2" & 3/8"  
PKHP - Available for 1/4" & 3/8" (10K rated)

## **Optional Connections**

NPT/STD  
BT - BSP Taper  
BP - BSP Parallel

Autoclave connections also available

Rev 1.2