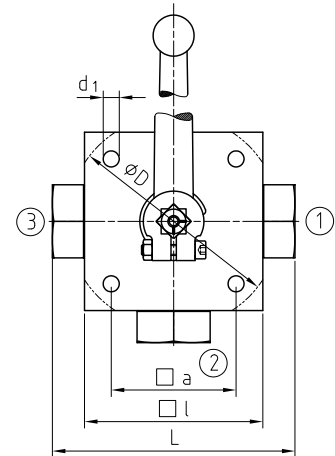
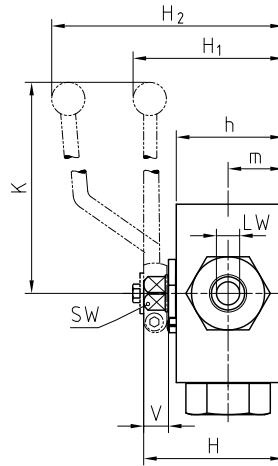
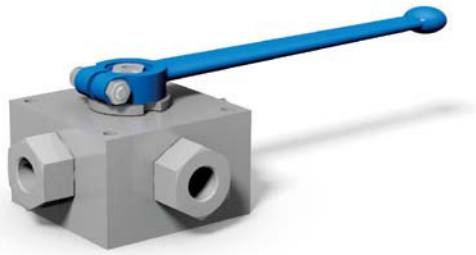


Multiway ball valve Steel

3KH



AVAILABLE SIZES

DN4 - DN25 (1/8" to 1")

CONNECTIONS

DIN ISO 228 Female thread, ANSI B1.20.1 NPT Female thread, DIN 2353/ISO 8434-1 Light / Heavy series, SAE J 514/ISO/DIS11926-1 Female thread, others on request

ACCESSORIES ON REQUEST

- Locking devices page 226 - 229
- Actuators 224 - 225
- Mounting holes on request
- Position switches on request
- Combinations 196 - 199
- Detent 235

MATERIAL CODE DESCRIPTION

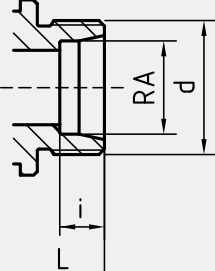
Materials	112A	112A	1128	1128
Body	Steel	Steel	Steel	Steel
Trunnion ball	Steel	Steel	Steel	Steel
Ball seats	POM	POM	POM	POM
O-rings	NBR	NBR	FPM	FPM
Tmin /Tmax	-20°C / 100°C	-20°C / 100°C	-20°C / 100°C	-20°C / 100°C
Porting pattern	L=SB01	T=SB02	L=SB01	T=SB02

GENERAL DIMENSIONS

Type	LW _{LT}	D	a	l	d ₁	H	h	m	K	V	SW	H ₁	H ₂	Lever
3KH-DN4	5	-	55	70	6,5	58	40	22	160	14	12	-	101	Al
3KH-DN6	5	-	55	70	6,5	58	40	22	160	14	12	-	101	Al
3KH-DN8	8	-	65	80	6,5	68	50	27	200	14	14	72	-	Zn
3KH-DN10	8	-	65	80	6,5	68	50	27	200	14	14	72	-	Zn
3KH-DN13	13	-	80	100	9	78	60	31	200	14	14	82	-	Zn
3KH-DN16	13	-	80	100	9	78	60	31	200	14	14	82	-	Zn
3KH-DN20	18	138	85	113	8,5	88	67	36,5	320	16,5	17	96	-	Al
3KH-DN25	23	138	85	119	8,5	103	82	47,5	320	16,5	17	112	-	Al
3KH-DN25/32	23	138	85	119	8,5	103	82	47,5	320	16,5	17	112	-	Al
3KH-DN25/40	23	138	85	119	8,5	103	82	47,5	320	16,5	17	112	-	Al

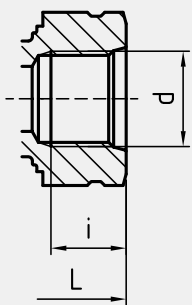
Multiway ball valve Steel

3KH

CONNECTION TYPE	DIMENSIONS					ORDER CODE PER MATERIAL COMBINATION					
DIN ISO 228 FEMALE THREAD	Type	L	i	d	Weight [Kg]	PN [bar]	112A L=SB01	112A T=SB02	1128 L=SB01	1128 T=SB02	
	3KH-DN4-G1/8	100	10	G1/8	1,60	500	02256*	02254	25762*	25867	
	3KH-DN6-G1/4	100	14	G1/4	1,60	500	20046*	22349	19767*	25868	
	3KH-DN10-G3/8	115	14	G3/8	2,70	500	19241*	20460	20502*	21512	
	3KH-DN13-G1/2	136	16,3	G1/2	4,90	400	19151*	20459	25763*	17220	
	3KH-DN16-G5/8	139	18	G5/8	4,90	400	02661*	02659	03162*	03171	
	3KH-DN20-G3/4	154	18	G3/4	6,70	315	19242*	20458	03163*	03172	
	3KH-DN25-G1	172	20	G1	8,30	315	19243*	20457	25765*	03173	
	3KH-DN25/32-G1 1/4	180	22	G1 1/4	8,50	315	27190	02203	25766	25871	
	3KH-DN25/40-G1 1/2	180	24	G1 1/2	8,50	250	30663	02209	25767	17304	
ANSI B1.20.1 NPT FEMALE THREAD	Type	L	i	d	Weight [Kg]	PN [bar]	112A L=SB01	112A T=SB02	1128 L=SB01	1128 T=SB02	
	3KH-DN4-1/8"NPT	100	10,5	1/8"NPT	1,60	500	33210	19444	25768	25872	
	3KH-DN6-1/4"NPT	100	13,7	1/4"NPT	1,60	500	14380	33212	15716	25873	
	3KH-DN10-3/8"NPT	115	13,5	3/8"NPT	2,80	500	04578	19446	25770	25874	
	3KH-DN13-1/2"NPT	160	17	1/2"NPT	5,20	400	16523	19447	25771	25875	
	3KH-DN20-3/4"NPT	164	18,3	3/4"NPT	6,80	315	17256	17314	15718	25876	
	3KH-DN25-1"NPT	186	21,6	1"NPT	8,50	315	19442	33213	25773	25877	
	3KH-DN25/32-1 1/4"NPT	186	22,1	1 1/4"NPT	8,80	315	19443	19449	16745	19455	
	3KH-DN25/40-1 1/2"NPT	186	22,1	1 1/2"NPT	8,80	250	33211	33214	25775	25879	
DIN 2353 / ISO 8434-1 LIGHT SERIES	Type	RA	L	i	d	Weight [Kg]	PN [bar]	112A L=SB01	112A T=SB02	1128 L=SB01	1128 T=SB02
	3KH-DN4-6L	6	105	7	M 12x1,5	1,60	500	02217*	02215	25746*	25851
	3KH-DN6-8L	8	105	7	M 14x1,5	1,80	500	02223*	02221	25747*	25852
	3KH-DN8-10L	10	114	7	M 16x1,5	2,60	500	02600*	02598	25748*	25853
	3KH-DN10-12L	12	114	7	M 18x1,5	2,60	500	02612*	24278	25749*	25854
	3KH-DN13-15L	15	137	7	M 22x1,5	4,70	400	02630*	02628	25750*	25855
	3KH-DN16-18L	18	137	7,5	M 26x1,5	4,70	400	22027*	02647	25751*	25856
	3KH-DN20-22L	22	152	7,5	M 30x2	6,60	315	20370*	24007	25752*	25857
	3KH-DN25-28L	28	166	7,5	M 36x2	8,00	315	02319*	02317	25753*	25858
	3KH-DN25/32-35L	35	170	10,5	M 45x2	8,12	315	02856*	02857	03130*	03139
DIN 2353 / ISO 8434-1 HEAVY SERIES	Type	RA	L	i	d	Weight [Kg]	PN [bar]	112A L=SB01	112A T=SB02	1128 L=SB01	1128 T=SB02
	3KH-DN4-8S	8	105	7	M 16x1,5	1,60	500	02304*	02303	25754*	25859
	3KH-DN6-10S	10	105	7,5	M 18x1,5	1,60	500	02308*	02309	19002*	25860
	3KH-DN8-12S	12	116	7,5	M 20x1,5	2,60	500	22863*	02604	25756*	25861
	3KH-DN10-14S	14	120	8	M 22x1,5	2,60	500	02618*	02616	25757*	25862
	3KH-DN13-16S	16	141	8,5	M 24x1,5	4,70	400	23058*	02634	25758*	25863
	3KH-DN16-20S	20	145	10,5	M 30x2	4,70	400	23059*	02653	25759*	25864
	3KH-DN20-25S	25	160	12	M 36x2	6,60	315	02268*	29891	25760*	25865
	3KH-DN25-30S	30	176	13,5	M 42x2	8,00	315	02274*	02272	25761*	25866
	3KH-DN25/32-38S	38	180	16	M 52x2	8,30	315	02852*	02853	03094*	03103

Please note the pressure ratings of the tube connections!

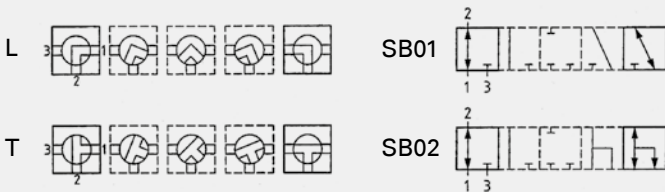
*Article usually in stock.

CONNECTION TYPE	DIMENSIONS					ORDER CODE PER MATERIAL COMBINATION				
	Type	L	i	d	Weight [Kg]	PN [bar]	112A L=SB01	112A T=SB02	1128 L=SB01	1128 T=SB02
SAE J514/ISO/DIS11926-1 FEMALE THREAD 	3KH-DN6-7/16" UNF	100	12	7/16"-20 UNF	1,60	500	37193	37364	31546	39103
	3KH-DN10-9/16" UNF	115	13	9/16"-18 UNF	2,80	500	37194	37365	25631	39104
	3KH-DN13-3/4" UNF	144	15	3/4"-16 UNF	5,20	400	37195	37366	37197	39105
	3KH-DN20-1 1/16" UN	164	20	1 1/16"-12 UN	6,80	315	37196	37367	37198	39106
	3KH-DN25-1 5/16" UN	180	20	1 5/16"-12 UN	8,50	315	32203	37368	22853	39107

Please note the pressure ratings of the tube connections!
 Due to material availability the material code of the steel valves may vary from 112A (or 1128). DN20-25=812A (or 8128). Material suitability for the application does not differ from 112A (or 1128).

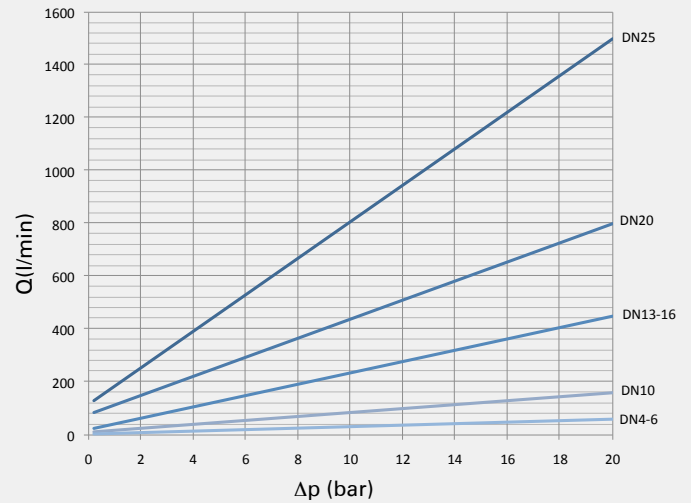
*Article usually in stock.

PORTING PATTERNS



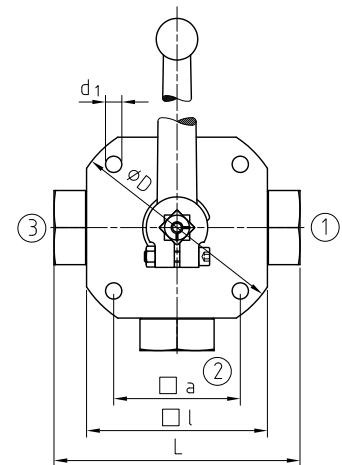
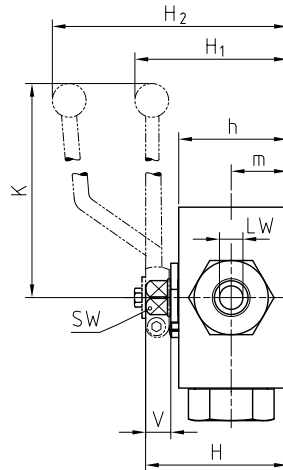
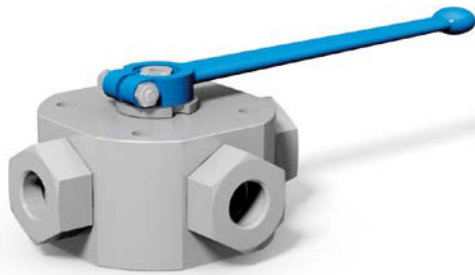
Further porting patterns page 250 to 255

FLOW CHARACTERISTICS 3KH-L/T



Multiway ball valve Stainless Steel

3KH



AVAILABLE SIZES

DN4 - DN25 (1/8" to 1")

CONNECTIONS

DIN ISO 228 Female thread, ANSI B1.20.1 NPT Female thread, DIN 2353/ISO 8434-1 Light / Heavy series, SAE J 514/ISO/DIS11926-1 Female thread, others on request

ACCESSORIES ON REQUEST

- Locking devices page 226 - 229
- Actuators 224 - 225
- Mounting holes on request
- Position switches on request
- Combinations 196 - 199
- Detent 235

MATERIAL CODE DESCRIPTION

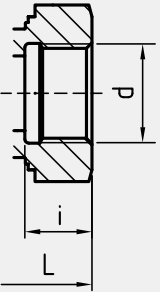
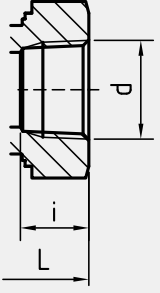
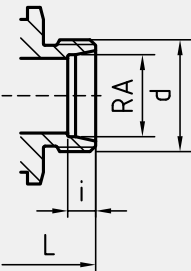
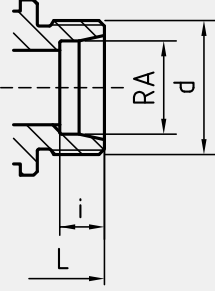
Materials	442A	442A	4428	4428
Body	Stainless Steel	Stainless Steel	Stainless Steel	Stainless Steel
Trunnion ball	Stainless Steel	Stainless Steel	Stainless Steel	Stainless Steel
Ball seats	POM	POM	POM	POM
O-rings	NBR	NBR	FPM	FPM
Tmin /Tmax	-30°C / 100°C	-30°C / 100°C	-20°C / 100°C	-20°C / 100°C
Porting pattern	L=SB01	T=SB02	L=SB01	T=SB02

GENERAL DIMENSIONS

Type	LW _{LT}	D	a	l	d ₁	H	h	m	K	V	SW	H ₁	H ₂	Lever
3KH-DN4	5	75	40	70	6,5	58	40	22	160	14	12	-	101	Al
3KH-DN6	5	75	40	70	6,5	58	40	22	160	14	12	-	101	Al
3KH-DN8	8	90	45	80	6,5	68	50	27	200	14	14	72	-	Zn
3KH-DN10	8	90	45	80	6,5	68	50	27	200	14	14	72	-	Zn
3KH-DN13	13	110	60	100	9	78	60	31	200	14	14	82	-	Zn
3KH-DN16	13	110	60	100	9	78	60	31	200	14	14	82	-	Zn
3KH-DN20	18	138	85	113	8,5	88	67	36,5	320	16,5	17	96	-	Al
3KH-DN25	23	138	85	119	8,5	103	82	47,5	320	16,5	17	112	-	Al
3KH-DN25/32	23	138	85	119	8,5	103	82	47,5	320	16,5	17	112	-	Al
3KH-DN25/40	23	138	85	119	8,5	103	82	47,5	320	16,5	17	112	-	Al

Multiway ball valve Stainless Steel

3KH

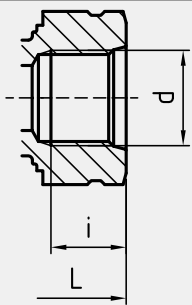
CONNECTION TYPE	DIMENSIONS					ORDER CODE PER MATERIAL COMBINATION					
DIN ISO 228 FEMALE THREAD	Type	L	i	d	Weight [Kg]	PN [bar]	442A L=SB01	442A T=SB02	4428 L=SB01	4428 T=SB02	
	3KH-DN4-G1/8	100	10	G1/8	1,60	500	37287	37347	37292	39088	
	3KH-DN6-G1/4	100	14	G1/4	1,60	500	12130	10548	32285	20675	
	3KH-DN10-G3/8	115	14	G3/8	2,70	500	10836	37348	37293	31637	
	3KH-DN13-G1/2	136	16,3	G1/2	4,90	400	14623	37349	36503	39089	
	3KH-DN16-G5/8	139	18	G5/8	4,90	400	37288	37350	37294	39090	
	3KH-DN20-G3/4	154	18	G3/4	6,70	315	37289	31516	37295	39091	
	3KH-DN25-G1	172	20	G1	8,30	315	29130	25433	37296	39092	
	3KH-DN25/32-G1 1/4	180	22	G1 1/4	8,50	315	37290	37351	37297	39093	
	3KH-DN25/40G1 1/2	180	24	G1 1/2	8,50	250	37291	37352	37298	39094	
ANSI B1.20.1 NPT FEMALE THREAD	Type	L	i	d	Weight [Kg]	PN [bar]	442A L=SB01	442A T=SB02	4428 L=SB01	4428 T=SB02	
	3KH-DN4-1/8"NPT	100	10,5	1/8"NPT	1,60	500	37299	37353	37305	39095	
	3KH-DN6-1/4"NPT	100	13,7	1/4"NPT	1,60	500	28248	37354	37306	39096	
	3KH-DN10-3/8"NPT	115	13,5	3/8"NPT	2,80	500	29181	37355	37307	39097	
	3KH-DN13-1/2"NPT	160	17	1/2"NPT	5,20	400	37300	37356	37308	39098	
	3KH-DN20-3/4"NPT	164	18,3	3/4"NPT	6,80	315	37301	29129	34995	39099	
	3KH-DN25-1"NPT	186	21,6	1"NPT	8,50	315	37302	37357	37309	39100	
	3KH-DN25/32-1 1/4"NPT	186	22,1	1 1/4"NPT	8,80	315	37303	37358	37310	39101	
	3KH-DN25/40-1 1/2"NPT	186	22,1	1 1/2"NPT	8,80	250	37304	32572	37311	39102	
DIN 2353 / ISO 8434-1 LIGHT SERIES	Type	RA	L	i	d	Weight [Kg]	PN [bar]	442A L=SB01	442A T=SB02	4428 L=SB01	4428 T=SB02
	3KH-DN4-6L	6	105	7	M 12x1,5	1,60	500	37199	37328	37267	39072
	3KH-DN6-8L	8	105	7	M 14x1,5	1,80	500	37200	37329	37268	39073
	3KH-DN8-10L	10	114	7	M 16x1,5	2,60	500	37262	32511	37269	39074
	3KH-DN10-12L	12	114	7	M 18x1,5	2,60	500	34556	37330	37270	39075
	3KH-DN13-15L	15	137	7	M 22x1,5	4,70	400	37263	37331	37271	39076
	3KH-DN16-18L	18	137	7,5	M 26x1,5	4,70	400	37264	37332	37272	39077
	3KH-DN20-22L	22	152	7,5	M 30x2	6,60	315	37265	37333	37273	39078
	3KH-DN25-28L	28	166	7,5	M 36x2	8,00	315	37266	37334	37274	39079
	3KH-DN25/32-35L	35	170	10,5	M 45x2	8,12	315	41942	41943	41944	41945
DIN 2353 / ISO 8434-1 HEAVY SERIES	Type	RA	L	i	d	Weight [Kg]	PN [bar]	442A L=SB01	442A T=SB02	4428 L=SB01	4428 T=SB02
	3KH-DN4-8S	8	105	7	M 16x1,5	1,60	500	37275	37335	37279	39080
	3KH-DN6-10S	10	105	7,5	M 18x1,5	1,60	500	37276	37336	37280	39081
	3KH-DN8-12S	12	116	7,5	M 20x1,5	2,60	500	31678	37337	37281	39082
	3KH-DN10-14S	14	120	8	M 22x1,5	2,60	500	18678	37338	37282	39083
	3KH-DN13-16S	16	141	8,5	M 24x1,5	4,70	400	32300	37339	37283	39084
	3KH-DN16-20S	20	145	10,5	M 30x2	4,70	400	37277	37340	37284	39085
	3KH-DN20-25S	25	160	12	M 36x2	6,60	315	37278	37341	37285	39086
	3KH-DN25-30S	30	176	13,5	M 42x2	8,00	315	29468	15986	37286	39087
	3KH-DN25/32-38S	38	180	16	M 52x2	8,30	315	41946	41947	41948	41949

Please note the pressure ratings of the tube connections!

*Article usually in stock.

Multiway ball valve Stainless Steel

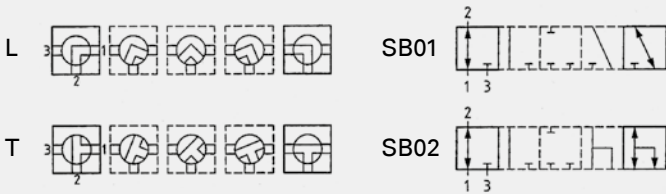
3KH

CONNECTION TYPE	DIMENSIONS					ORDER CODE PER MATERIAL COMBINATION				
	Type	L	i	d	Weight [Kg]	PN [bar]	442A L=SB01	442A T=SB02	4428 L=SB01	4428 T=SB02
SAE J514/ISO/DIS11926-1 FEMALE THREAD 	3KH-DN6-7/16" UNF	100	12	7/16"-20 UNF	1,60	500	37312	37359	37317	39108
	3KH-DN10-9/16" UNF	115	13	9/16"-18 UNF	2,80	500	37313	37360	37318	39109
	3KH-DN13-3/4" UNF	144	15	3/4"-16 UNF	5,20	400	37314	37361	37319	39110
	3KH-DN20-1 1/16" UN	164	20	1 1/16"-12 UN	6,80	315	37315	37362	37320	39111
	3KH-DN25-1 5/16" UN	180	20	1 5/16"-12 UN	8,50	315	37316	37363	37321	39112

Please note the pressure ratings of the tube connections!

*Article usually in stock.

PORTING PATTERNS



Further porting patterns page 250 to 255

FLOW CHARACTERISTICS 3KH-L/T

