

Product Description

Push-to-Connect couplings of the IB Series made of brass from STAUFF consist of a male tip and a female body which are used for quick and easy connection (push) and disconnection of tubes, pipes and hoses by hand, i.e. without tools.

The Series was developed according to ISO 7241-1 B in the following nominal sizes 06, 10, 12, 19, 25, 38, 51 (1/4" - 2").

Features

- poppet valve
- Coupling made of brass
- Integrated locking system preventing unintentional release of the coupling
- ISO Interchange acc. to ISO 7241-1 Series B

Applications



Industrial Hydraulic

Top Features



Designed for secure connection

The proven design is suitable for use in industrial Hydraulic. Other applications may, depending on the pressure and flow characteristics, include construction equipment, oil tools, oil equipment steel mill machinery, and other demanding industrial hydraulic applications.

IB



Series IB • Brass

Material	Brass
Surface Finishing	-
Standard Seal Material(s)	FKM (Viton®) ²
Working Temperature	-25° C ... +200° C / -13° F ... +392° F
Valve Design	Poppet Valve
Connection	Push and actuate Push Sleeve
Disconnection	Actuate Push Sleeve
Connect Under Pressure	not allowed
Application	Industrial Hydraulic
ISO Interchange	Up to DN 25 according to ISO 7241-1, Series B



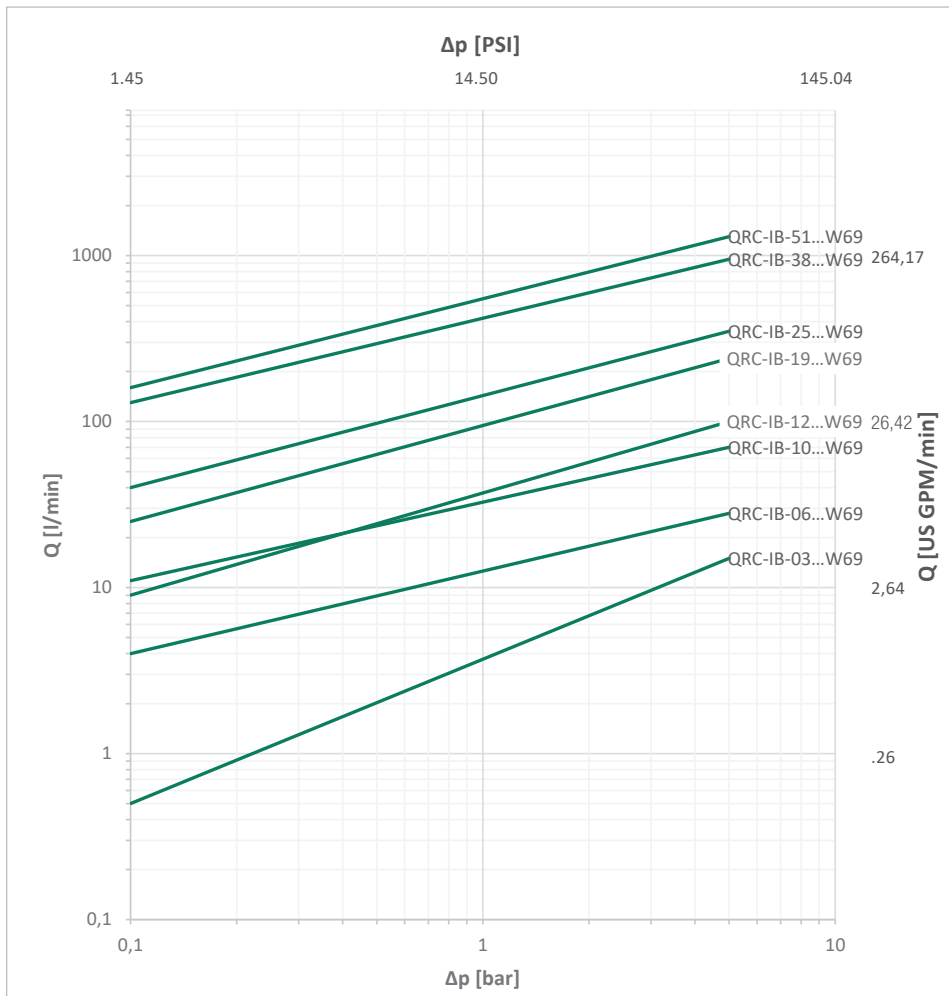
² Alternative seal materials are available on request.

Technical Data

Series	BG	DN Zoll Inch	DN metric ISO 4397	Q _{max}		Working Pressure		Bursting Pressure Connected		Female Body		Male Tip		Spillage	
				l/min	US GPM	bar	PSI	bar	PSI	bar	PSI	bar	PSI	ml	fl oz
IB-06	1	1/4"	6,3	18	4.76	160	2321	640	9282	600	8702	600	8702	1	.0338
IB-10	2	3/8"	10	34,5	9.11	160	2321	640	9282	640	9282	640	9282	2,4	.0812
IB-12	3	1/2"	12,5	67,5	17.83	160	2321	640	9282	640	9282	600	8702	3,9	.1319
IB-19	4	3/4"	19 (20)	159	42.00	125	1813	500	7252	500	7252	500	7252	11	.3720
IB-25	6	1"	25	283	74.76	100	1450	400	5802	400	5802	400	5802	19	.6425
IB-38	8	1 1/2"	38	513	135.52	63	914	250	3626	250	3626	250	3626	95	3.32
IB-51	9	2"	51	788	208.17	50	725	200	2901	200	2901	200	2901	170	5.95

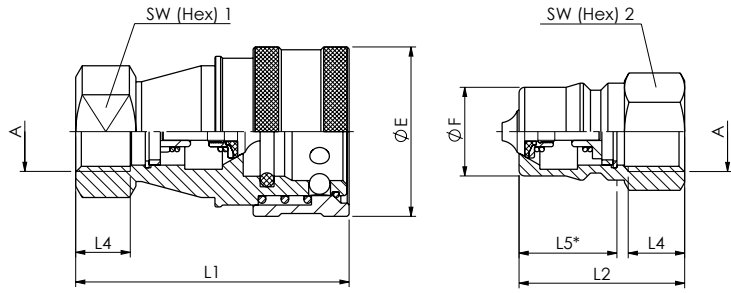
The indicated pressure ratings only apply to the coupling itself and depend on the connection type.

Flow Characteristics



Please note: Unless otherwise stated, all flow characteristics have been determined with hydraulic oil with a kinematic viscosity of 28,8 - 35,2 mm²/s (28,8 - 35,2 cSt) and are only valid for components with non-reducing connections.





SW: Width across flats. All dimensions in mm (inch). Drawing similar Series IB-12.
* Insertion Male Tip.

Series IB-06 ▪ BG 1 ▪ Nominal Size 6,3

Port A	Dimensions (^{mm} / _{in})								Female Body Ordering Codes	Weight (^{kg} / _{lbs}) ca. per 100	Male Tip Ordering Codes	Weight (^{kg} / _{lbs}) ca. per 100	
	ØE	ØF	L1	L2	L4	L5	SW1	SW2					
Female Thread according to DIN 3852 - ISO 1179-1 - ANSI B 1.20.3													
	G 1/4"	28,5	14,2	58	36	13	21,5	19	19	QRC-IB-06-F-G04-VT-W69	14,45 31.86	QRC-IB-06-M-G04-V-W69	3,28 7.23
	NPTF 1/4" -18	28,5	14,2	58	36		21,5	19	19	QRC-IB-06-F-NF04-VT-W69	14,55 32.08	QRC-IB-06-M-NF04-V-W69	3,38 7.45

Series IB-10 ▪ BG 2 ▪ Nominal Size 10

Port A	Dimensions (^{mm} / _{in})								Female Body Ordering Codes	Weight (^{kg} / _{lbs}) ca. per 100	Male Tip Ordering Codes	Weight (^{kg} / _{lbs}) ca. per 100	
	ØE	ØF	L1	L2	L4	L5	SW1	SW2					
Female Thread according to DIN 3852 - ISO 1179-1 - ANSI B 1.20.3													
	G 3/8"	35	19,1	65	40	13	28,2	24	22	QRC-IB-10-F-G06-VT-W69	22,46 49.52	QRC-IB-10-M-G06-V-W69	7,11 15.67
	NPTF 3/8" -18	35	19,1	65	40		28,2	24	22	QRC-IB-10-F-NF06-VT-W69	22,65 49.93	QRC-IB-10-M-NF06-V-W69	7,21 15.90

Series IB-12 ▪ BG 3 ▪ Nominal Size 12,5

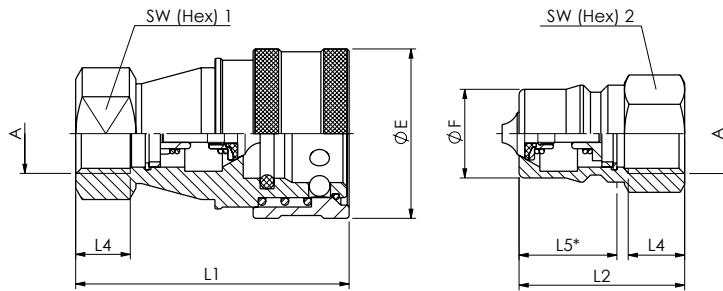
Port A	Dimensions (^{mm} / _{in})								Female Body Ordering Codes	Weight (^{kg} / _{lbs}) ca. per 100	Male Tip Ordering Codes	Weight (^{kg} / _{lbs}) ca. per 100	
	ØE	ØF	L1	L2	L4	L5	SW1	SW2					
Female Thread according to DIN 3852 - ISO 1179-1 - ANSI B 1.20.3													
	G 1/2"	45	23,55	72,6	44	14,5	27,2	29	27	QRC-IB-12-F-G08-VT-W69	45,33 99.94	QRC-IB-12-M-G08-V-W69	11,16 24.60
	NPTF 1/2" -14	45	23,55	72,6	44		27,2	29	27	QRC-IB-12-F-NF08-VT-W69	45,72 100.80	QRC-IB-12-M-NF08-V-W69	11,54 25.44

Series IB-19 ▪ BG 4 ▪ Nominal Size 19

Port A	Dimensions (^{mm} / _{in})								Female Body Ordering Codes	Weight (^{kg} / _{lbs}) ca. per 100	Male Tip Ordering Codes	Weight (^{kg} / _{lbs}) ca. per 100	
	ØE	ØF	L1	L2	L4	L5	SW1	SW2					
Female Thread according to DIN 3852 - ISO 1179-1 - ANSI B 1.20.3													
	G 3/4"	54	31,5	88,2	52	16	34	36	36	QRC-IB-19-F-G12-VT-W69	71,75 158.18	QRC-IB-19-M-G12-V-W69	23,19 51.13
	NPTF 3/4" -14	54	31,5	88,2	52		34	36	36	QRC-IB-19-F-NF12-VT-W69	72,11 158.98	QRC-IB-19-M-NF12-V-W69	23,58 51.99

Note: The connection of the two halves of a coupling is achieved depending on the type. It is important to observe the positive engagement of plug-type couplings and the secure tightening of screw-type couplings to the limit stop of the thread. Forced or improper separation will result in malfunction of the coupling.

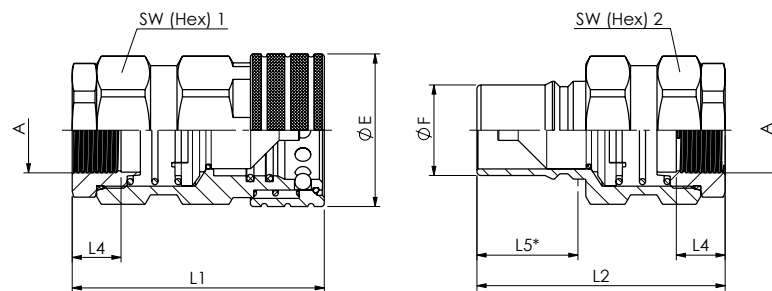




SW: Width across flats. All dimensions in mm (inch). Drawing similar Series IB-12.
* Insertion Male Tip.

Series IB-25 ▪ BG 6 ▪ Nominal Size 25

Port A	Dimensions (mm/in)								Female Body Ordering Codes	Weight (^{kg} /lbs) ca. per 100	Male Tip Ordering Codes	Weight (^{kg} /lbs) ca. per 100	
	ØE	ØF	L1	L2	L4 min	L5	SW1	SW2					
Female Thread according to DIN 3852 - ISO 1179-1 - ANSI B 1.20.3													
	G 1"	65	37,8	102	62	20	39,3	41	40	QRC-IB-25-F-G16-VT-W69	108,96 240.22	QRC-IB-25-M-G16-V-W69	36,43 80.31
	NPTF 1" -11 1/2	65	37,8	102	62		39,3	41	40	QRC-IB-25-F-NF16-VT-W69	109,16 240.66	QRC-IB-25-M-NF16-V-W69	36,62 80.73



* Insertion Male Tip.

Series IB-38 ▪ BG 8 ▪ Nominal Size 38

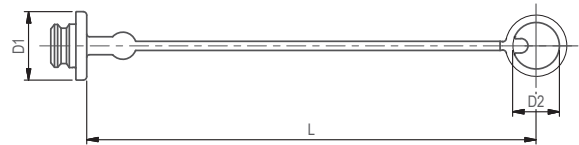
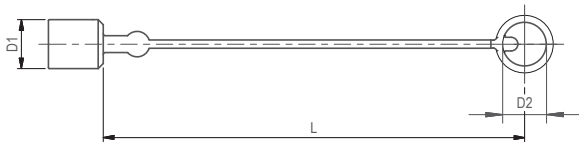
Port A	Dimensions (mm/in)								Female Body Ordering Codes	Weight (^{kg} /lbs) ca. per 100	Male Tip Ordering Codes	Weight (^{kg} /lbs) ca. per 100	
	ØE	ØF	L1	L2	L4 min	L5	SW1	SW2					
Female Thread according to DIN 3852 - ISO 1179-1 - ANSI B 1.20.3													
	G 1 1/4"	75	44,5	124	122	24	52	65	65	QRC-IB-38-F-G20-VT-W69	205,91 453.95	QRC-IB-38-M-G20-V-W69	131,33 289.53
	NPTF 1 1/4" -11 1/2	75	44,5	124	122		52	65	65	QRC-IB-38-F-NF20-VT-W69	203,9 449.52	QRC-IB-38-M-NF20-V-W69	132,35 291.78
		2.95	1.75	4.88	4.80		2.05	2.56	2.56				
	G 1 1/2"	75	44,5	124	122	24	52	65	65	QRC-IB-38-F-G24-VT-W69	199,97 440.86	QRC-IB-38-M-G24-V-W69	125,18 275.97
NPTF 1 1/2" -11 1/2		75	44,5	124	122		52	65	65	QRC-IB-38-F-NF24-VT-W69	201,11 443.37	QRC-IB-38-M-NF24-V-W69	127,1 280.21

Series IB-51 ▪ BG 9 ▪ Nominal Size 51

Port A	Dimensions (mm/in)								Female Body Ordering Codes	Weight (^{kg} /lbs) ca. per 100	Male Tip Ordering Codes	Weight (^{kg} /lbs) ca. per 100	
	ØE	ØF	L1	L2	L4 min	L5	SW1	SW2					
Female Thread according to DIN 3852 - ISO 1179-1 - ANSI B 1.20.3													
	G 2"	101	63,2	141,5	139,2	30,5	63,5	95	95	QRC-IB-51-F-G32-VT-W69	558,57 1231.44	QRC-IB-51-M-G32-V-W69	387,11 853.43
		3.98	2.49	5.57	5.48	1.20	2.50	3.74	3.74				
	NPTF 2" -11 1/2	101	63,2	141,5	139,2		63,5	95	95	QRC-IB-51-F-NF32-VT-W69	558,57 1231.44	QRC-IB-51-M-NF32-V-W69	387,11 853.43
		3.98	2.49	5.57	5.48		2.50	3.74	3.74				

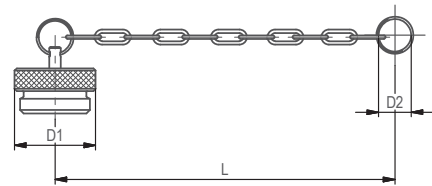
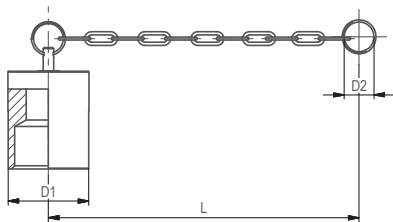
Note: The connection of the two halves of a coupling is achieved depending on the type. It is important to observe the positive engagement of plug-type couplings and the secure tightening of screw-type couplings to the limit stop of the thread. Forced or improper separation will result in malfunction of the coupling.



Series IB • Dust Protection


Dimensions (mm/in)			Material	Dust Cap for Male Tip
D1	D2	L		Ordering Codes
18	23	240	Plastic (Colour: Red)	QRC-IB-06-DM-23-KI-RD
.71	.91	9.45		
23	24	240	Plastic (Colour: Red)	QRC-IB-10-DM-24-KI-RD
.91	.94	9.45		
29	28	245	Plastic (Colour: Red)	QRC-IB-12-DM-28-KI-RD
1.14	1.10	9.65		
36,0	38	245	Plastic (Colour: Red)	QRC-IB-19-DM-38-KI-RD
1.42	1.50	9.65		
44	44	253	Plastic (Colour: Red)	QRC-IB-25-DM-44-KI-RD
1.73	1.73	9.96		

Dimensions (mm/in)			Material	Dust Plug for Female Body
D1	D2	L		Ordering Codes
26	23	240	Plastic (Colour: Red)	QRC-IB-06-DF-23-KI-RD
1.02	.91	9.45		
33	25	235	Plastic (Colour: Red)	QRC-IB-10-DF-25-KI-RD
1.30	.98	9.25		
38	29	240	Plastic (Colour: Red)	QRC-IB-12-DF-29-KI-RD
1.50	1.14	9.45		
49	38	240	Plastic (Colour: Red)	QRC-IB-19-DF-38-KI-RD
1.93	1.50	9.45		
60	46	245	Plastic (Colour: Red)	QRC-IB-25-DF-46-KI-RD
2.36	1.81	9.65		



Dimensions (mm/in)			Material	Dust Cap for Male Tip
D1	D2	L		Ordering Codes
22	22	245	Aluminium with chain	QRC-IB-06-DM-28/CN-W89-SI
.87	.87	9.65		
27	30	155	Aluminium with chain	QRC-IB-10-DM-30/CN-W89-SI
1.06	1.18	6.10		
35	41	265	Aluminium with chain	QRC-IB-12-DM-41/CN-W89-SI
1.38	1.61	10.43		
42	30	250	Aluminium with chain	QRC-IB-19-DM-30/CN-W89-SI
1.65	1.18	9.84		
48	49	340	Aluminium with chain	QRC-IB-25-DM-49/CN-W89-SI
1.89	1.93	13.39		
55	46	225	Aluminium with chain	QRC-IB-38-DM-46/CN-W89-SI
2.17	1.81	8.86		
80	75	350	Aluminium with chain	QRC-IB-51-DM-75/CN-W89-SI
3.15	2.95	13.78		

Dimensions (mm/in)			Material	Dust Plug for Female Body
D1	D2	L		Ordering Codes
22	22	210	Aluminium with chain	QRC-IB-06-DF-30/CN-W89-SI
.87	.87	8.27		
22	30	155	Aluminium with chain	QRC-IB-10-DF-30/CN-W89-SI
.87	1.18	6.10		
28	41	305	Aluminium with chain	QRC-IB-12-DF-41/CN-W89-SI
1.10	1.61	12.01		
35	43	265	Aluminium with chain	QRC-IB-19-DF-43/CN-W89-SI
1.38	1.69	10.43		
44	41	240	Aluminium with chain	QRC-IB-25-DF-41/CN-W89-SI
1.73	1.61	9.45		
74	46	225	Aluminium with chain	QRC-IB-38-DF-46/CN-W89-SI
2.91	1.81	8.86		
105	75	350	Aluminium with chain	QRC-IB-51-DF-75/CN-W89-SI
4.13	2.95	13.78		

In addition to the standard colours as stated above, plastic dust caps are also available in blue, green, yellow and black. Please use the color codes BU, GN, YE and BK respectively instead of RD.

IB
