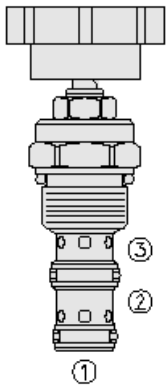




Overview



**Description**

An adjustable, pressure compensated, flow control valve. It CAN be used as a priority type flow regulator, or a restrictive type, 2-way, flow regulator when the bypass line (port 2) is blocked

**Operation**

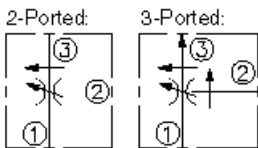
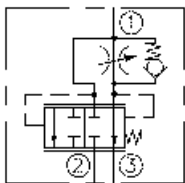
The regulated flow increases from closed to fully open, with counter-clockwise adjustment rotation. The valve will maintain the set flow regardless of pressure variations on the regulated or bypass port

**note:** it is intended for use with mineral based or synthetic hydraulic fluids with lubricating properties

**Features**

- o Bypass port 2 may be fully pressurized.
- o Fine low-torque adjustment.
- o Hardened steel parts for long life.
- o Quiet, modulated response.
- o Industry-common cavity.

Symbol



Ratings

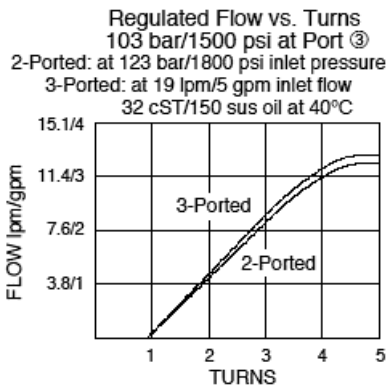
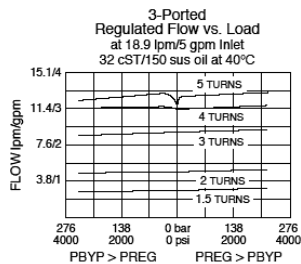
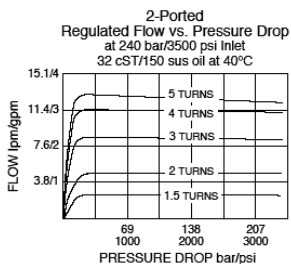
**Pressure Ratings**

Pressure rating 240 bar (3500 psi)

**Flow Ratings**

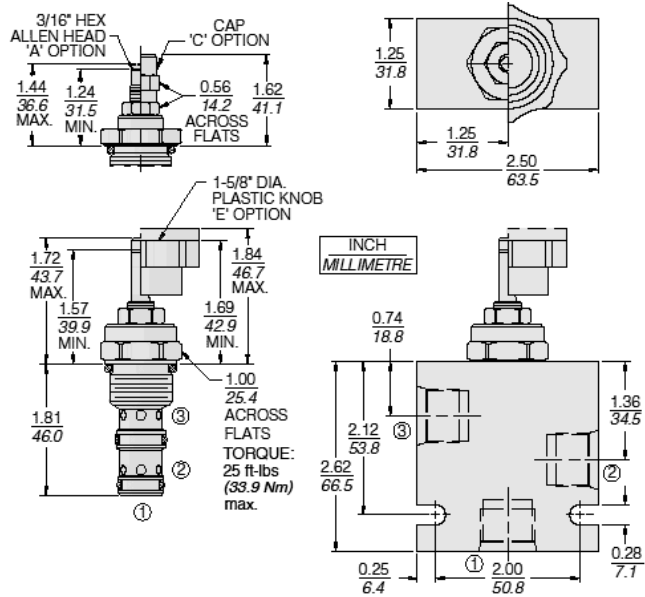
Regulated flow	0 to 12 lpm (0 to 3.2 gpm)	- <b>Note:</b> 2-ported
	0 to 13 lpm (0 to 3.5 gpm)	- <b>Note:</b> 3-ported
Inlet flow rating	0 to 19 lpm (0 to 5 gpm)	- <b>Note:</b> Nominal, 3-ported
	0 to 26 lpm (0 to 7 gpm)	- <b>Note:</b> Maximum, 3-ported

Performance





## Dimensions



## Materials

### Materials

**Cartridge:** Weight: 0.30 kg. (0.68 lbs.); Steel with hardened work surfaces. Zinc-plated exposed surfaces; Buna N O-rings and polyester elastomer back-ups standard.

**Standard Ported Body:** Weight: 0.36 kg. (0.80 lbs.); Anodized high-strength aluminum alloy, rated to 207 bar (3000 psi); Ductile iron bodies available; dimensions may differ.

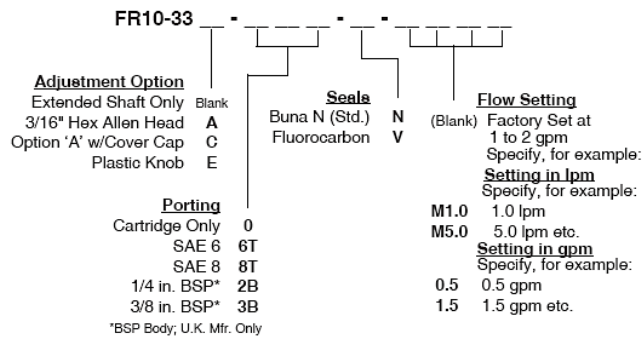
## Installation Specifications

Cavity	VC10-3
Cartridge installation torque	33.9 N-m (25 ft-lb)



**Order Code**

POSITION	CODE	DESCRIPTION
		FR10-33F-H-J/T
F		Adjustment Option
F	A	3/16" Hex Allen Head
F	BLANK	Extended Shaft Only
F	C	3/16" Hex Allen Head with Cover Cap
F	E	Plastic Knob
H		Line Body
H	0	No Body
H	6T	Aluminum SAE 6
H	8T	Aluminum SAE 8
H	6TD	Ductile Iron SAE 6
H	8TD	Ductile Iron SAE 8
H	3B	Aluminum BSPP 3/8" (3)
H	3BD	Ductile Iron BSPP 3/8" (3)
J		Seal
J	N	Buna-N
J	V	Fluorocarbon
J	P	Polyurethane
J	U	PPDI Urethane
T		Flow setting
T	XX	Flow setting



\*BSP Body, U.K. Mfr. Only