



In line pressure compensated double-acting flow control valves

FT 270/2

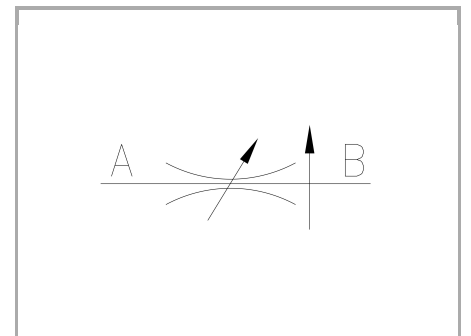
Compensated double-acting flow control valves available from 1/4" to 1" BSPP size, max. working pressure 250 Bar, adjustable oil flow rate from 2 to 140 Lt./min. (depending on the size) - Precision in compensation +/- 5% max

Double-acting control

Pressure compensated In line or panel mounting

Carbon steel

Attacchi: F - F Female - Female



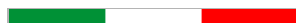
Technical information

Technical description

The pressure compensated valves FT 270/2 are made up of an adjustable orifice and of a pressure compensator piston. Inside the base they are equipped with wide transversal sections which reduce the pressure drop. The accuracy of the internal components processing ensures a very low hysteresis and a remarkable precision in compensation that for this series is around $\pm 5\%$ of the flow rate. The accurate checks carried out on the products ensure a proper functioning of the valves also in heavy working conditions and an excellent lasting reliability.

Materials

CORPO BASE / BASE BODY	Acciaio/Steel 11 S Mn Pb 37-UNI EN 10087
CORPO CARTUCCIA / CARTRIDGE BODY	Acciaio/Steel 39 Ni Cr Mo 3-UNI EN 10083
GUARNIZIONI / GASKETS	Di serie NBR - A richiesta FPM/Standard NBR-on demand FPM
ANELLI ANTIESTRUSIONE / ANTIEXTRUSION RINGS	PTFE
MANOPOLA TIPO MA - RA / KNOB TYPE MA - RA	Alluminio/Aluminum GD AlSi12- UNI EN AB 46100
MANOPOLA TIPO MP / KNOB TYPE MP	ABS

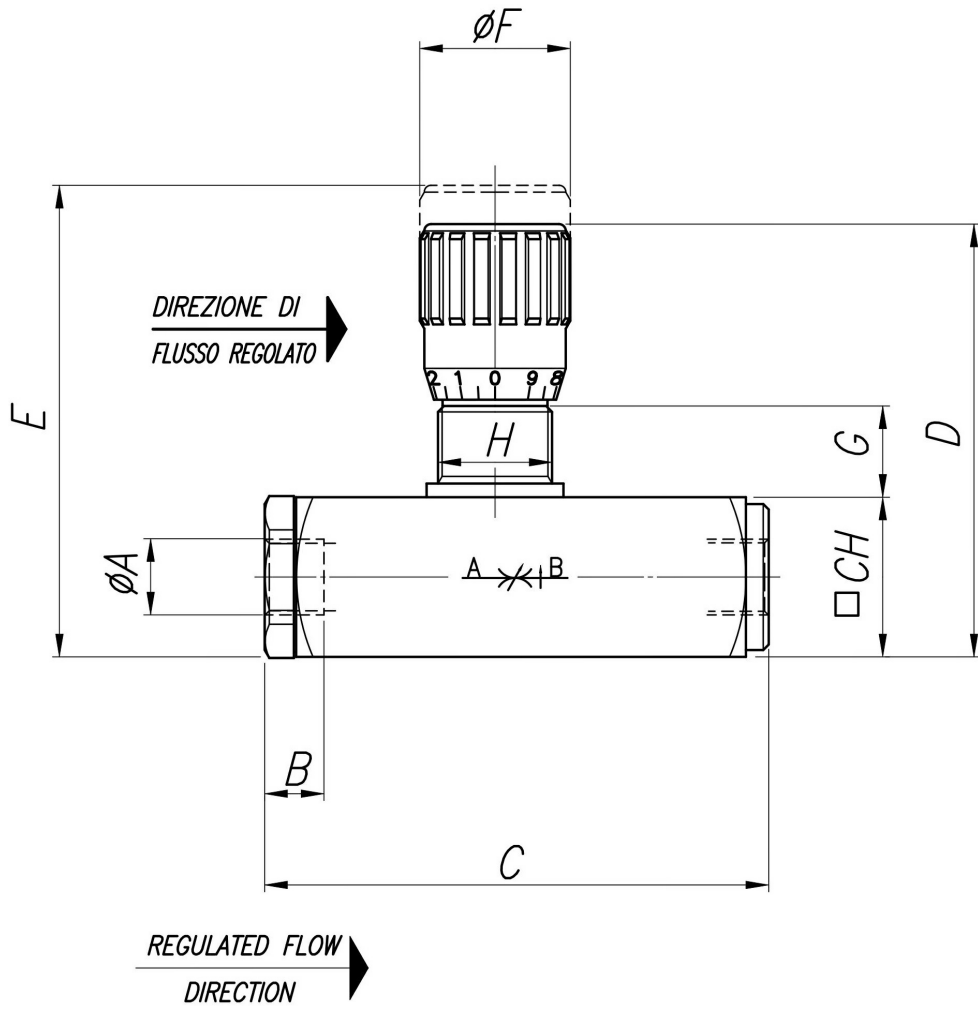


Technical data

TIPO / TYPE	PRESSIONE ESERCIZIO BAR / WORKING PRESSURE BAR	MIN. PRESSIONE SCOPPIO BAR / MIN. BURSTING PRESSURE BAR	TEMPERATURA ESERCIZIO / WORKING TEMPERATURE	GRADO DI FILTRAZIONE μm / FILTRATION GRADE μm
14	250	5	-20°C/+70°C	25
38	250	7	-20°C/+70°C	25
12	250	10	-20°C/+70°C	25
34	250	10	-20°C/+70°C	25
100	250	16	-20°C/+70°C	25

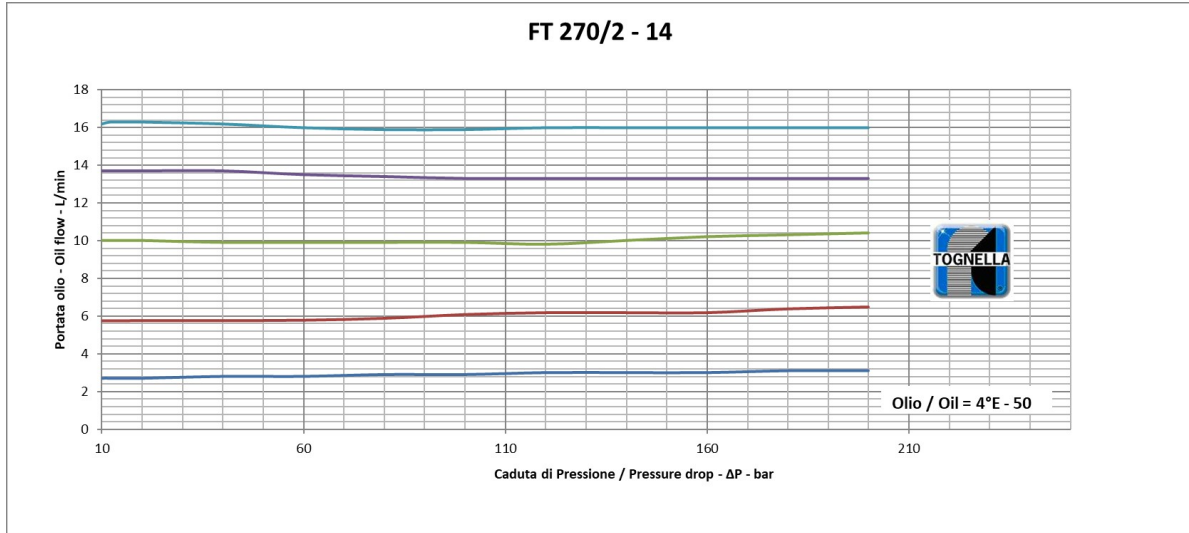
Dimensional tables and drawings

TIPO / TYPE	A UNI 338	B	C	D	E	$\varnothing F$	G	H	CH	PESO / WEIGHT KG
14	1/4" G	12,5	94	81,5	88,5	27	15	M20x1	30	0,580
38	3/8" G	13	110,5	94,5	103	33	17	M25x1,5	35	0,940
12	1/2" G	15,5	137	112	122	38	18	M30x1,5	45	1,830
34	3/4" G	17	163	138	150	47	24	M40x1,5	55	3,350
100	1" G	21	214	175	192	58	32	M50x1,5	70	7,000

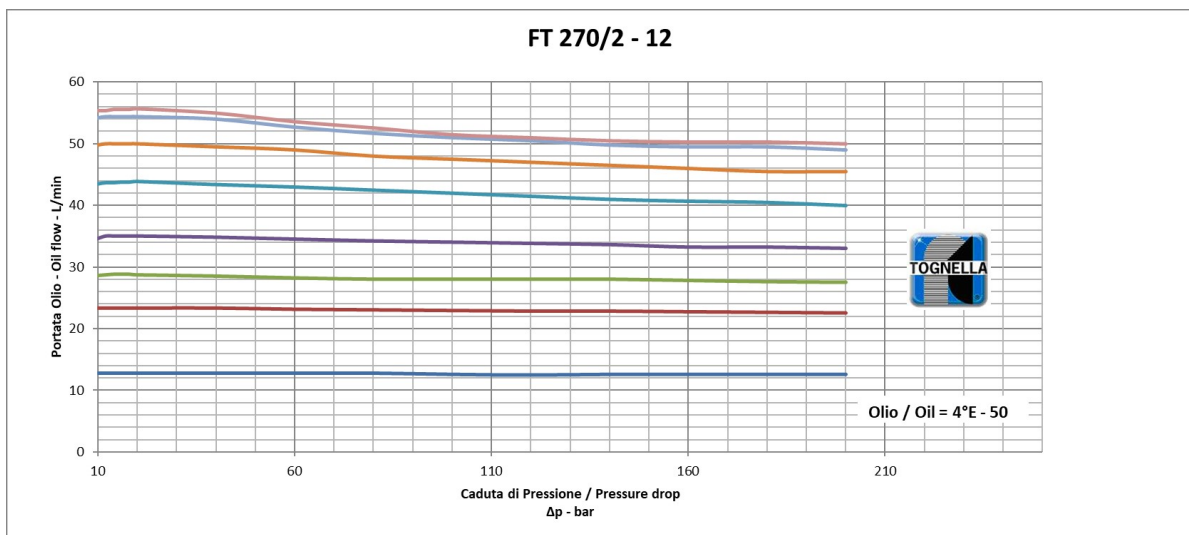
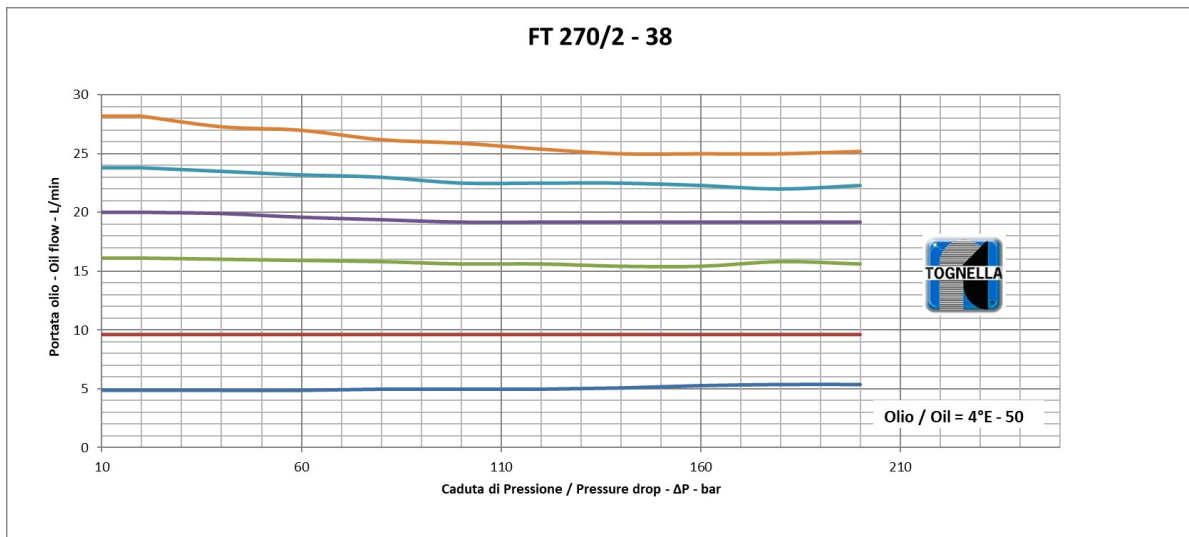


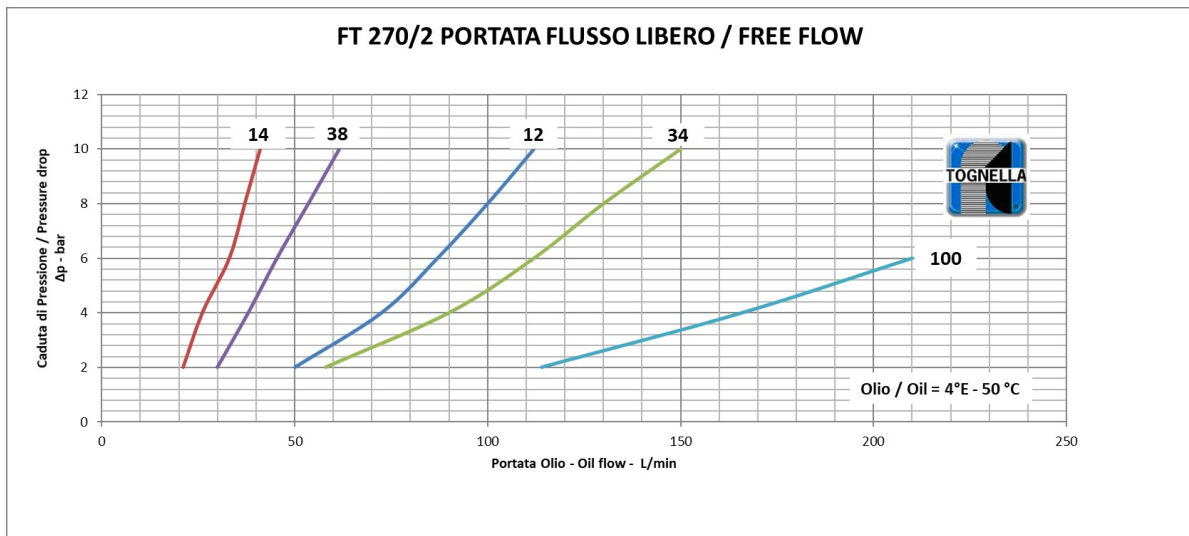
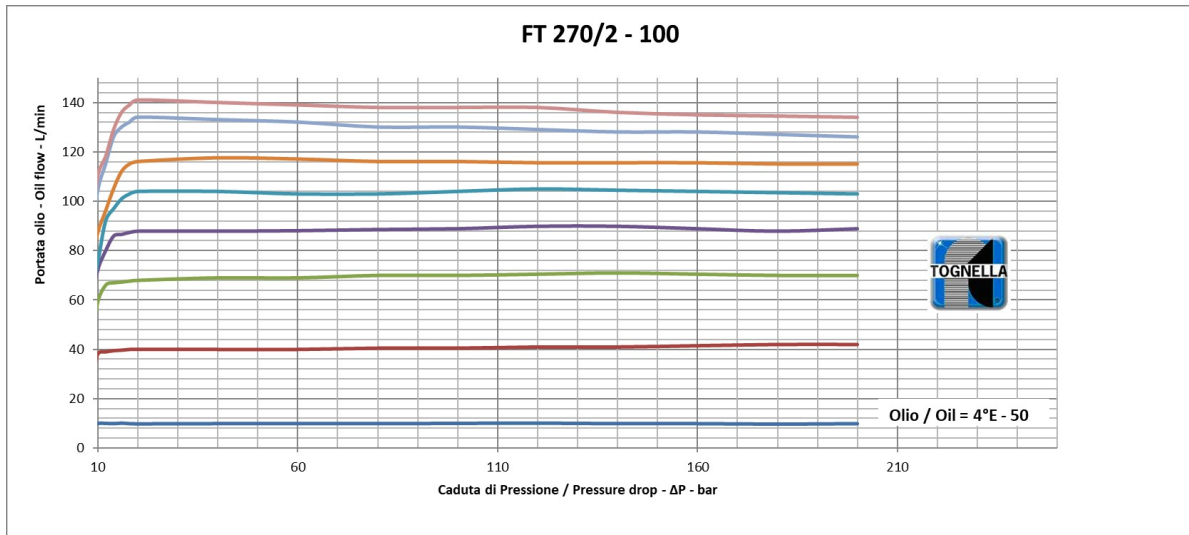
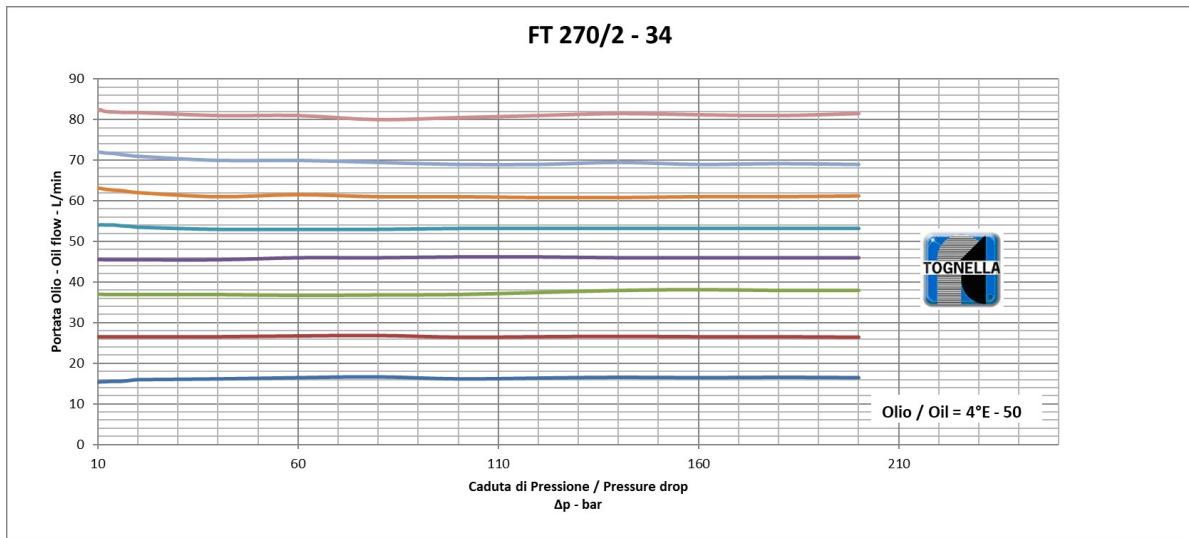


Flow rate curves



a







FT 270/2

